

PRICE DASHBOARD

No 139 – December 2023 edition

This price dashboard provides a monthly summary of price data for the most representative agricultural inputs, agricultural products and consumer food prices, at EU and world level. Although not all the products are comparable at both EU and world level, this document is intended to give an indication on the most recent price developments.

Date of publication: 23.01.2024

AGRICULTURAL COMMODITY PRICES – December 2023

| Agricultural Commodity | EUROPEAN UNION 27 | | | WORLD | | | |
|-------------------------------|--------------------|---------------|----------------|----------------------|--------------------|---------------|----------------|
| | Monthly average | Annual change | Monthly change | Monthly average | | Annual change | Monthly change |
| CEREALS ⁽¹⁾ | EUR/T | % | % | USD/T | EUR/T | % | % |
| Soft wheat | 223 | -28.5% | -1.6% | 257 ⁽²⁾ | 236 | -18.3% | 8.4% |
| Durum wheat | 365 | -23.3% | -2.6% | 290 ⁽³⁾ | 266 | -24.8% | 3.6% |
| Maize | 199 | -31.9% | -3.4% | 204 | 187 | -32.6% | 2.1% |
| Barley | 201 | -28.3% | -1.5% | 193 | 177 | -29.5% | 10.2% |
| MEAT | | | | | | | |
| Beef | 4,956 | -3.9% | 1.0% | 4,791 | 4,395 | 1.7% | -1.9% |
| Pork | 2,119 | 3.7% | -0.1% | 1,083 ⁽⁶⁾ | 993 ⁽⁶⁾ | -38.6% | -23.4% |
| Poultry | 2,669 | 0.6% | -0.5% | 2,753 | 2,525 | 0.8% | 8.6% |
| DAIRY | | | | | | | |
| Butter | 5,449 | -7.4% | 5.0% | 5,200 | 4,769 | 10.8% | 5.1% |
| Cheese | 3,625 | -32.5% | 0.2% | 4,142 | 3,799 | -16.2% | 4.2% |
| SMP | 2,622 | -11.8% | 0.0% | 2,621 | 2,404 | -14.3% | -2.3% |
| WMP | 3,686 | -12.1% | 1.3% | 3,142 | 2,882 | -5.0% | 3.7% |
| OILSEEDS | | | | | | | |
| Soya beans | : | : | : | 526 ⁽⁵⁾ | 483 | -18.5% | -5.0% |
| Rapeseed | 388 ⁽⁵⁾ | -31.7% | -3.7% | : | : | : | : |
| SUGAR | | | | | | | |
| White sugar | 854 ⁽⁴⁾ | 37.3% | 1.5% | 633 | 581 | 15.3% | -15.0% |
| RICE (milled) | | | | | | | |
| Japonica | 1,400 | -4.1% | 6.1% | 1,025 | 940 | -36.2% | -1.8% |
| Indica | 1,070 | 18.9% | 2.7% | 625 | 574 | 41.4% | 11.6% |

Notes:

Changes in world prices are based on prices expressed in USD.

1) EU cereal quotations: soft wheat and barley (delivered Rouen), durum wheat (Port-La-Nouvelle/La Palice) and maize (Bordeaux).

2-3) US Soft Red Winter Wheat and US Hard Red Winter Wheat.

4) Figures for previous month.

5) Preliminary price.

6) World pork price is represented by US, as it is the biggest world exporter after the EU.

For any comments and questions please contact us at the e-mail address AGRI-A2@ec.europa.eu

FOOD PRICE INDICES – December 2023

European Union, Eurostat index, 2005=100

| EU-27 consumer food prices, index 2005=100 | Monthly average | Annual change | Monthly change |
|--|-----------------|---------------|----------------|
| FOOD | 176.7 | 5.7% | 0.1% |
| Bread and cereals | 180.8 | 5.3% | 0.0% |
| Meat | 168.7 | 4.4% | -0.1% |
| Milk, cheese and eggs | 175.9 | 0.5% | -0.1% |
| Fats and oils | 218.3 | 4.5% | -0.2% |
| Sugar | 159.3 | 9.0% | -0.2% |

FAO index, 2002-2004=100

| FAO food prices, index 2002-2004=100 | Monthly average | Annual change | Monthly change |
|--------------------------------------|-----------------|---------------|----------------|
| FOOD | 118.5 | -10.1% | -1.5% |
| Cereals | 122.8 | -16.6% | 1.5% |
| Meat | 110.4 | -1.8% | -1.0% |
| Dairy | 116.1 | -16.0% | 1.6% |
| Fats and oils | 122.4 | -15.3% | -1.4% |
| Sugar | 134.6 | 14.9% | -16.6% |

World Bank index, 2010=100

| World Bank commodity prices, index 2010=100 | Monthly average | Annual change | Monthly change |
|---|-----------------|---------------|----------------|
| FOOD | 120.0 | -7.4% | -3.0% |
| Oils and meals | 111.8 | -13.7% | -4.0% |
| Grains | 122.7 | -14.8% | 2.2% |
| Other food | 128.4 | 10.1% | -5.9% |

AGRICULTURAL INPUT PRICES

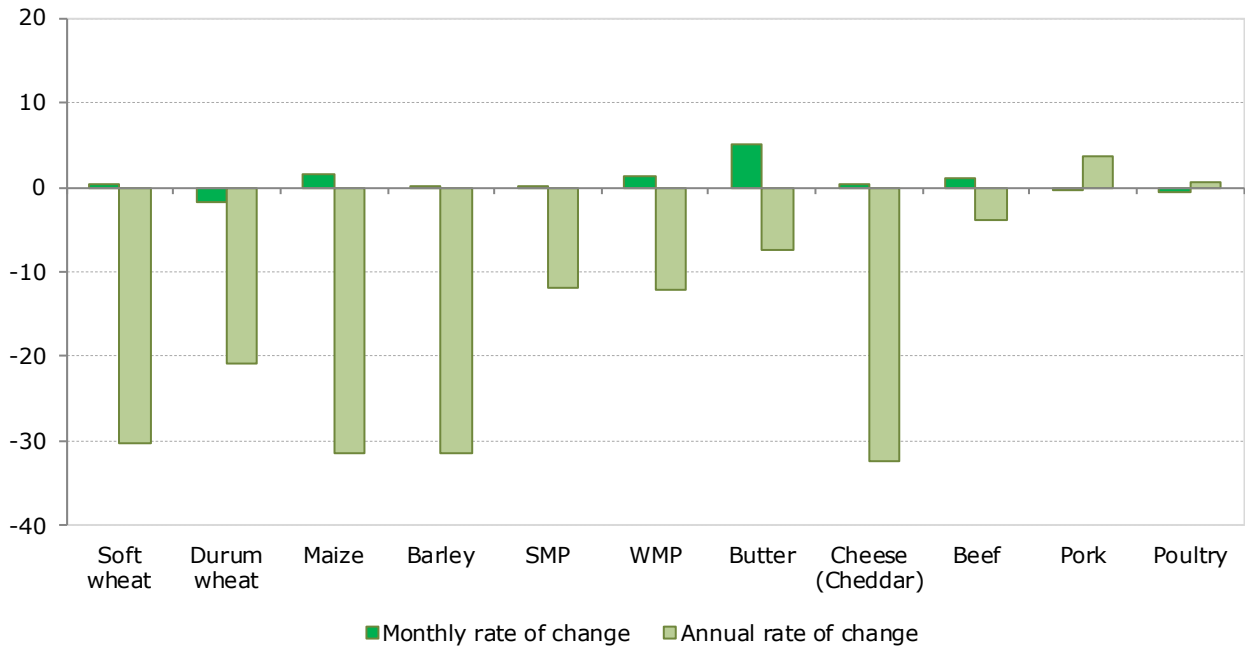
| Agricultural input index 2010=100 | Monthly average | Annual change | Monthly change |
|-----------------------------------|-----------------|---------------|----------------|
| ENERGY | 99.5 | -24.0% | -6.3% |
| Crude oil, Brent (USD/bbl) | 77.9 | -3.8% | -6.4% |
| Crude oil, WTI (USD/bbl) | 72.1 | -5.8% | -6.9% |
| Natural gas, Europe (USD/mmbtu) | 11.5 | -68.1% | -20.6% |
| Natural gas, US (USD/mmbtu) | 2.5 | -54.1% | -6.7% |
| FERTILIZERS | 119.4 | -36.0% | -24.0% |
| Phosphate rock (USD/mt) | | | |
| Diammonium phosphate (USD/mt) | 563.8 | -9.8% | 5.2% |
| Potassium chloride (USD/mt) | 311.9 | -39.3% | -6.0% |
| Triple superphosphate (USD/mt) | 447.5 | -23.4% | -3.3% |
| Urea (USD/mt) | 354.0 | -31.8% | -8.2% |

Please refer to Annex 1 and 2 for detailed data and graphs on EU price developments (for agricultural commodities and food) and commodity world quotations, as well as a description of the data used and their sources.

Annex 1

Agricultural commodity prices

**Chart 1. Monthly and annual changes in agricultural commodity prices in EU-27
(%, December 2023 compared to November 2023 and to December 2022)**



**Table 1. Monthly changes in agricultural commodity prices in EU-27
(%, December 2023 compared to November 2023)**

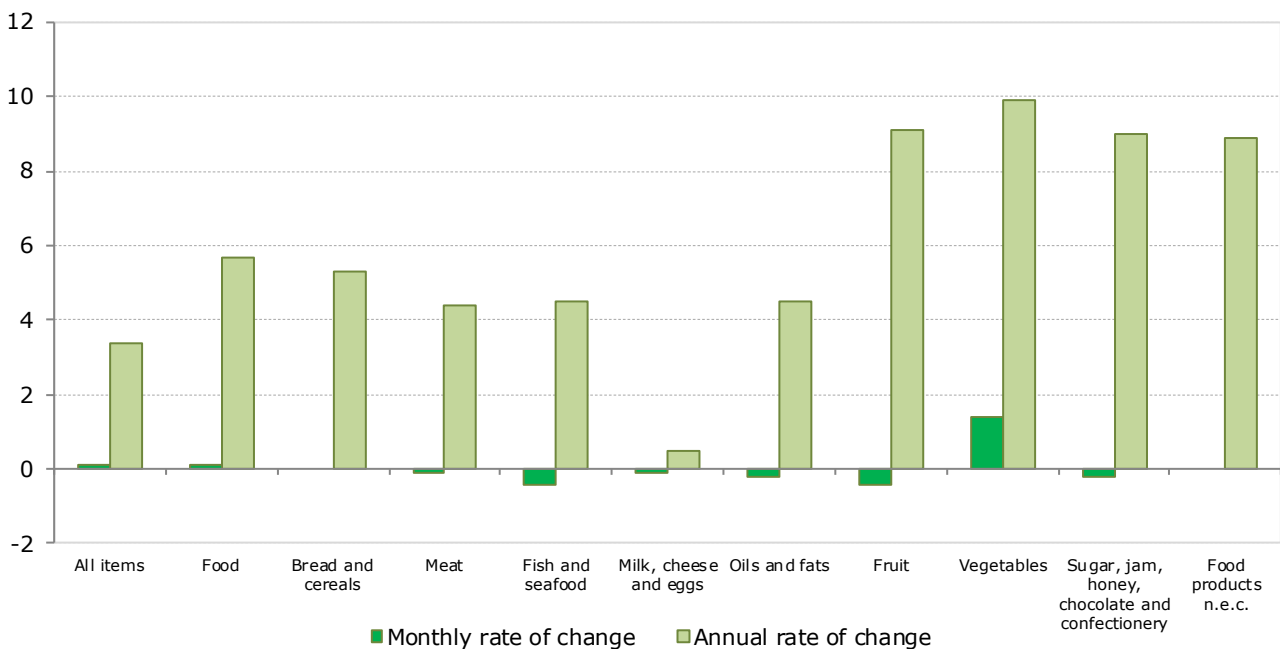
| | Soft wheat | Durum wheat | Maize | Barley | SMP | WMP | Butter | Cheese (Cheddar) | Beef | Pork | Poultry |
|--------------|------------|-------------|------------|------------|------------|------------|------------|------------------|------------|-------------|-------------|
| EU 27 | 0.4 | -1.7 | 1.5 | 0.0 | 0.0 | 1.3 | 5.0 | 0.2 | 1.0 | -0.1 | -0.5 |
| Belgium | | | -2.8 | -3.5 | -2.2 | -0.2 | 0.8 | | -0.4 | 0.7 | -2.1 |
| Bulgaria | -0.5 | | -1.5 | -0.7 | | | | | 1.0 | -0.6 | 0.0 |
| Czechia | -0.4 | | | | 5.8 | | 3.9 | | | 0.2 | 1.2 |
| Denmark | | | -4.3 | -4.1 | | | | | -1.0 | 1.2 | |
| Germany | -1.0 | | 0.2 | 0.2 | -1.1 | 1.5 | 2.9 | | 0.9 | 0.2 | 0.0 |
| Estonia | -0.7 | | | -1.8 | | | -4.4 | | | -0.6 | |
| Ireland | | | | -0.6 | 5.4 | 2.3 | 8.0 | -0.6 | 4.7 | -2.5 | 4.3 |
| Greece | -12.7 | 4.8 | 0.1 | 15.6 | | | | | 0.0 | 0.5 | 0.3 |
| Spain | 0.3 | -2.7 | 3.7 | 0.9 | | | 2.8 | | 0.1 | -1.0 | 0.5 |
| France | -1.2 | -2.9 | -0.7 | -0.8 | | | | | 0.4 | -0.5 | 0.0 |
| Croatia | -2.3 | | 3.3 | 6.9 | | | | | 0.0 | -2.5 | 0.6 |
| Italy | 0.5 | -0.1 | -0.4 | 0.8 | | | 6.5 | | -2.8 | | -0.4 |
| Cyprus | | | | | | | | | | 0.4 | 0.1 |
| Latvia | 0.0 | | | -3.7 | | | | | 0.0 | 5.0 | |
| Lithuania | -2.2 | | -6.0 | -4.2 | | | | | 3.2 | 2.8 | |
| Luxembourg | | | | | | | | | | | |
| Hungary | -2.5 | | 2.9 | -6.0 | | | | | | 4.3 | -2.2 |
| Malta | | | | | | | | | | 0.0 | 0.0 |
| Netherlands | | | 0.0 | -0.8 | -1.0 | 0.1 | -0.1 | | 10.8 | 0.0 | |
| Austria | -2.1 | 1.9 | -0.2 | 0.0 | | | | | 1.8 | 0.5 | 1.0 |
| Poland | 2.3 | | 1.7 | 1.1 | 2.4 | 0.8 | 4.8 | | 1.0 | -2.6 | -5.3 |
| Portugal | 0.3 | | -0.4 | 0.5 | | | | | 2.3 | -0.7 | 0.0 |
| Romania | -2.5 | | 0.5 | 0.8 | | | | | 1.9 | 8.5 | 0.8 |
| Slovenia | -2.5 | | -2.1 | | | | | | 0.1 | -0.1 | 3.4 |
| Slovakia | 10.6 | | -1.8 | | | | 3.7 | | | 2.2 | -2.2 |
| Finland | 2.9 | | | -3.7 | | | | | 0.2 | 0.1 | -0.1 |
| Sweden | -0.3 | | | | | | | | 3.5 | 3.6 | 4.9 |

**Table 2. Annual changes in agricultural commodity prices in EU-27
(%, December 2023 compared to December 2022)**

| | Soft wheat | Durum wheat | Maize | Barley | SMP | WMP | Butter | Cheese (Cheddar) | Beef | Pork | Poultry |
|--------------|--------------|--------------|--------------|--------------|--------------|--------------|-------------|------------------|-------------|------------|------------|
| EU 27 | -30.2 | -20.9 | -31.6 | -31.5 | -11.8 | -12.1 | -7.4 | -32.5 | -3.9 | 3.7 | 0.6 |
| Belgium | | | 7.1 | -30.3 | -15.3 | -10.8 | 1.6 | | -7.0 | 8.6 | -5.5 |
| Bulgaria | -32.3 | | -30.8 | -43.0 | | | | | 4.6 | 2.5 | -8.5 |
| Czechia | -35.9 | | | | -25.1 | | -11.0 | | | 5.0 | -7.0 |
| Denmark | | | -23.3 | -23.4 | | | | | -11.1 | 4.7 | |
| Germany | -29.9 | | -30.7 | -32.6 | -5.8 | -8.8 | 2.7 | | -7.9 | 5.9 | 4.2 |
| Estonia | -29.8 | | | -33.1 | | | -10.4 | | | 4.1 | |
| Ireland | | | | -26.5 | -19.5 | -10.1 | -13.9 | -33.9 | 0.6 | -2.4 | 0.1 |
| Greece | -35.1 | -22.6 | -23.9 | -25.7 | | | | | 4.8 | 3.6 | 4.7 |
| Spain | -26.0 | -20.1 | -22.9 | -26.0 | | | -16.2 | | -6.3 | -0.5 | 8.7 |
| France | -29.3 | -21.6 | -30.6 | -28.9 | | | | | -2.3 | -1.7 | 0.0 |
| Croatia | -42.6 | | -49.4 | -43.3 | | | | | 7.1 | -6.8 | 0.4 |
| Italy | -33.0 | -22.0 | -32.9 | -34.1 | | | -2.5 | | -4.2 | | -3.7 |
| Cyprus | | | | | | | | | | 9.2 | -2.5 |
| Latvia | -23.7 | | | -39.0 | | | | | -16.5 | 6.6 | |
| Lithuania | -27.1 | | -47.0 | -38.7 | | | | | -6.6 | 6.6 | |
| Luxembourg | | | | | | | | | | | |
| Hungary | -45.0 | | -47.4 | -50.1 | | | | | | 10.2 | -0.3 |
| Malta | | | | | | | | | | 0.2 | -2.3 |
| Netherlands | | | -29.0 | -27.3 | 11.2 | -8.5 | 7.0 | | -38.5 | 8.9 | |
| Austria | -33.7 | | -38.5 | -38.5 | | | | | -1.3 | 4.8 | -7.4 |
| Poland | -30.5 | | -34.6 | -37.5 | -17.6 | -22.2 | -10.4 | | -1.6 | 2.8 | -1.1 |
| Portugal | -23.6 | | -29.2 | -29.3 | | | | | -2.3 | 0.0 | 9.8 |
| Romania | -34.7 | | -34.9 | -38.5 | | | | | 9.1 | 9.5 | 0.9 |
| Slovenia | -38.2 | | -47.8 | | | | | | 3.9 | 3.9 | -3.0 |
| Slovakia | -35.5 | | -51.7 | | | | -13.2 | | | 13.4 | -3.2 |
| Finland | -22.6 | | | -27.2 | | | | | 0.4 | -2.3 | -2.5 |
| Sweden | -22.4 | | | | | | | | 1.6 | -1.3 | -2.5 |

Food consumer prices

**Chart 2. Monthly and annual changes in food consumer prices in EU-27
(%, December 2023 compared to November 2023 and to December 2022)**



**Table 3. Monthly changes in food consumer prices in EU-27
(%, December 2023 compared to November 2023)**

| | All items | Food | Bread and cereals | Meat | Fish and seafood | Milk, cheese and eggs | Oils and fats | Fruit | Vegetables | Sugar, jam, honey, chocolate and confectionery | Food products n.e.c. |
|--------------------------|------------|------------|-------------------|-------------|------------------|-----------------------|---------------|-------------|------------|--|----------------------|
| European Union 27 | 0.1 | 0.1 | 0.0 | -0.1 | -0.4 | -0.1 | -0.2 | -0.4 | 1.4 | -0.2 | 0.0 |
| Belgium | 1.1 | 0.1 | 0.5 | 0.7 | -1.7 | 0.1 | 0.3 | -2.7 | 0.5 | 0.8 | 0.3 |
| Bulgaria | 0.3 | 0.8 | 0.2 | 0.7 | -0.9 | 1.1 | 0.1 | -5.8 | 3.2 | 0.6 | 1.8 |
| Czechia | -0.4 | -1.4 | -0.1 | -1.4 | -2.6 | -1.5 | -3.1 | -5.6 | 0.6 | -1.7 | -0.6 |
| Denmark | -0.5 | -2.5 | -1.8 | -2.9 | -4.1 | -2.5 | -16.2 | -1.6 | -1.8 | 0.0 | -1.5 |
| Germany | 0.2 | 0.1 | 0.2 | -0.3 | -0.1 | -0.2 | -0.2 | 1.6 | 0.8 | -0.3 | 0.1 |
| Estonia | 0.0 | -0.4 | -0.3 | -0.9 | -0.2 | -1.7 | -1.0 | 1.8 | 1.7 | -1.0 | -0.4 |
| Ireland | 0.4 | 0.0 | 0.3 | 0.1 | -0.3 | 0.3 | -0.1 | 0.1 | -0.5 | -0.1 | -0.3 |
| Greece | 0.1 | 0.1 | -0.1 | -0.1 | 1.1 | 0.0 | 3.4 | -2.7 | 2.7 | -0.4 | -0.9 |
| Spain | 0.0 | -0.1 | 0.3 | 0.4 | 0.7 | 0.2 | 0.3 | -2.7 | -0.3 | -0.1 | 0.1 |
| France | 0.1 | 0.1 | -0.1 | -0.2 | -1.0 | -0.1 | -0.2 | -0.1 | 1.5 | 0.2 | 0.1 |
| Croatia | -0.3 | 0.1 | -0.4 | 0.3 | -1.2 | -0.7 | -1.5 | 1.6 | 2.9 | -0.1 | -1.9 |
| Italy | 0.2 | 0.3 | 0.0 | 0.2 | 0.0 | -0.1 | 1.1 | -0.2 | 1.8 | 0.2 | 0.3 |
| Cyprus | -1.2 | -2.2 | -0.9 | -2.6 | -2.3 | -0.2 | -4.1 | -2.2 | -7.1 | -1.5 | -0.1 |
| Latvia | -0.7 | 0.1 | 0.8 | -1.1 | 1.0 | -1.4 | -0.6 | 3.6 | 1.2 | -0.2 | 0.7 |
| Lithuania | -0.6 | -0.8 | -0.4 | -0.9 | -0.9 | -0.8 | -2.0 | -1.7 | 3.5 | -4.9 | -1.1 |
| Luxembourg | -0.4 | 0.0 | 0.2 | -0.3 | -0.3 | 0.4 | 0.3 | -0.6 | 0.4 | 0.2 | -0.7 |
| Hungary | -0.3 | -0.3 | -0.4 | -0.3 | -1.3 | 0.0 | -0.5 | -6.6 | 6.1 | -1.1 | -0.6 |
| Malta | -0.2 | 1.9 | 0.2 | 0.1 | 0.5 | 1.8 | 0.5 | 1.7 | 11.1 | 0.2 | 0.4 |
| Netherlands | 0.2 | 0.0 | -0.4 | -0.4 | -3.1 | 0.4 | -1.4 | 2.6 | 0.6 | 0.1 | -0.2 |
| Austria | 0.5 | 0.4 | 0.6 | 0.6 | -1.7 | 0.7 | 1.4 | -1.5 | 0.0 | 1.1 | 1.3 |
| Poland | 0.1 | 0.4 | 0.1 | -0.1 | -1.0 | 0.2 | -1.5 | 1.5 | 3.0 | -0.6 | -0.3 |
| Portugal | -0.7 | -0.6 | 0.1 | -0.6 | -0.4 | -0.4 | -1.4 | -4.6 | 1.8 | 0.4 | -0.6 |
| Romania | 0.2 | 0.4 | -0.2 | -0.1 | 0.2 | 0.5 | -0.7 | 0.9 | 2.1 | -0.1 | 0.2 |
| Slovenia | -0.6 | 0.1 | -0.2 | -0.6 | 0.3 | 0.3 | 0.1 | 1.9 | 0.6 | -1.2 | 0.9 |
| Slovakia | -0.1 | 0.0 | 0.9 | 0.4 | -0.7 | -1.1 | -2.0 | -0.5 | 1.6 | -0.9 | -0.8 |
| Finland | 0.2 | -0.6 | -0.1 | -0.3 | -1.4 | -0.4 | -1.4 | -1.9 | 1.2 | -2.8 | -0.5 |
| Sweden | 0.7 | 0.1 | 0.6 | 2.6 | -1.8 | -0.1 | -1.8 | -1.9 | -1.3 | 0.1 | 1.1 |

**Table 4. Annual changes in food consumer prices in EU-27
(%, December 2023 compared to December 2022)**

| | All items | Food | Bread and cereals | Meat | Fish and seafood | Milk, cheese and eggs | Oils and fats | Fruit | Vegetables | Sugar, jam, honey, chocolate and confectionery | Food products n.e.c. |
|--------------------------|------------|------------|-------------------|------------|------------------|-----------------------|---------------|------------|------------|--|----------------------|
| European Union 27 | 3.4 | 5.7 | 5.3 | 4.4 | 4.5 | 0.5 | 4.5 | 9.1 | 9.9 | 9.0 | 8.9 |
| Belgium | 0.5 | 7.3 | 6.7 | 6.7 | 5.7 | 6.8 | 4.6 | 9.5 | 9.7 | 9.1 | 6.8 |
| Bulgaria | 5.0 | 5.5 | 5.9 | 10.6 | 3.1 | -0.7 | -21.1 | 11.1 | 11.3 | 6.8 | 7.1 |
| Czechia | 7.6 | -1.1 | 0.8 | -2.9 | -0.2 | -11.1 | -10.7 | 5.7 | 18.9 | 2.1 | 4.6 |
| Denmark | 0.4 | 1.9 | 4.3 | -0.3 | 0.4 | -3.7 | -3.5 | 2.4 | 5.7 | 6.9 | 2.5 |
| Germany | 3.8 | 5.1 | 8.4 | 3.1 | 6.0 | -1.7 | -10.9 | 12.0 | 6.8 | 10.4 | 8.3 |
| Estonia | 4.3 | 4.1 | 4.3 | 5.4 | 4.3 | -0.4 | -5.0 | 6.2 | 5.9 | 7.9 | 3.8 |
| Ireland | 3.2 | 5.2 | 5.6 | 3.1 | 4.8 | 1.0 | 2.2 | 3.6 | 10.2 | 8.6 | 10.3 |
| Greece | 3.7 | 8.9 | 2.6 | 6.5 | 8.4 | 3.8 | 34.2 | 14.9 | 13.7 | 7.6 | 7.0 |
| Spain | 3.3 | 7.3 | 3.5 | 6.2 | 4.6 | 0.9 | 36.4 | 9.7 | 10.5 | 10.9 | 7.7 |
| France | 4.1 | 7.4 | 7.5 | 4.6 | 3.7 | 8.4 | 4.1 | 7.2 | 11.6 | 10.5 | 7.2 |
| Croatia | 5.4 | 6.7 | 6.5 | 7.5 | 4.6 | -3.3 | -2.7 | 14.3 | 17.8 | 9.9 | 3.5 |
| Italy | 0.5 | 6.1 | 3.8 | 3.3 | 3.0 | 0.8 | 28.1 | 12.9 | 11.4 | 5.9 | 3.9 |
| Cyprus | 1.9 | 3.4 | 2.1 | 2.3 | -0.9 | 0.7 | -1.6 | 13.7 | 5.4 | 6.1 | 5.7 |
| Latvia | 0.9 | 2.0 | 4.1 | 2.3 | 3.4 | -8.8 | -6.3 | 10.3 | 11.1 | 8.4 | 5.8 |
| Lithuania | 1.6 | 1.4 | 1.5 | 6.5 | 2.5 | -5.1 | -14.2 | 2.8 | 5.7 | 0.9 | 7.8 |
| Luxembourg | 3.2 | 7.3 | 6.8 | 6.2 | 3.6 | 6.5 | 9.0 | 9.7 | 10.3 | 10.9 | 6.4 |
| Hungary | 5.5 | 0.5 | -2.3 | 3.8 | 2.2 | -11.8 | -6.8 | 5.9 | 7.9 | 18.3 | 9.1 |
| Malta | 3.7 | 10.2 | 8.0 | 3.9 | 13.9 | 9.3 | 7.8 | 11.4 | 21.6 | 12.5 | 11.6 |
| Netherlands | 1.0 | 4.1 | 7.2 | 2.2 | 4.0 | -2.9 | -6.3 | 7.0 | 5.6 | 7.7 | 8.2 |
| Austria | 5.7 | 5.5 | 6.6 | 5.0 | 10.3 | 0.3 | -3.7 | 3.3 | 10.4 | 10.0 | 8.5 |
| Poland | 6.2 | 7.0 | 8.4 | 4.5 | 3.8 | 1.6 | -12.7 | 5.5 | 12.3 | 8.1 | 13.9 |
| Portugal | 1.9 | 1.4 | 0.9 | 0.3 | -1.0 | -4.8 | 1.3 | 3.9 | 8.4 | 12.3 | 6.2 |
| Romania | 7.0 | 4.6 | 0.7 | 8.4 | 13.4 | 1.4 | -17.5 | 5.7 | 8.5 | 2.9 | 9.7 |
| Slovenia | 3.8 | 4.1 | 5.0 | 2.8 | 6.2 | -0.7 | -10.8 | 9.8 | 9.3 | 5.9 | 6.5 |
| Slovakia | 6.6 | 6.3 | 10.4 | 6.3 | 6.6 | -1.3 | -8.5 | 8.2 | 14.7 | 14.8 | 7.7 |
| Finland | 1.3 | 2.4 | 5.1 | 0.0 | 1.3 | 0.7 | 1.1 | 2.4 | -1.0 | 7.4 | 4.4 |
| Sweden | 1.9 | 5.9 | 4.6 | 5.0 | 10.6 | -2.5 | -3.3 | 8.0 | 10.0 | 12.1 | 7.6 |

Chart 3. Cereals/bread and cereals based products: EU agricultural market and consumer price developments (January 2000 until December 2023, 2000=100)

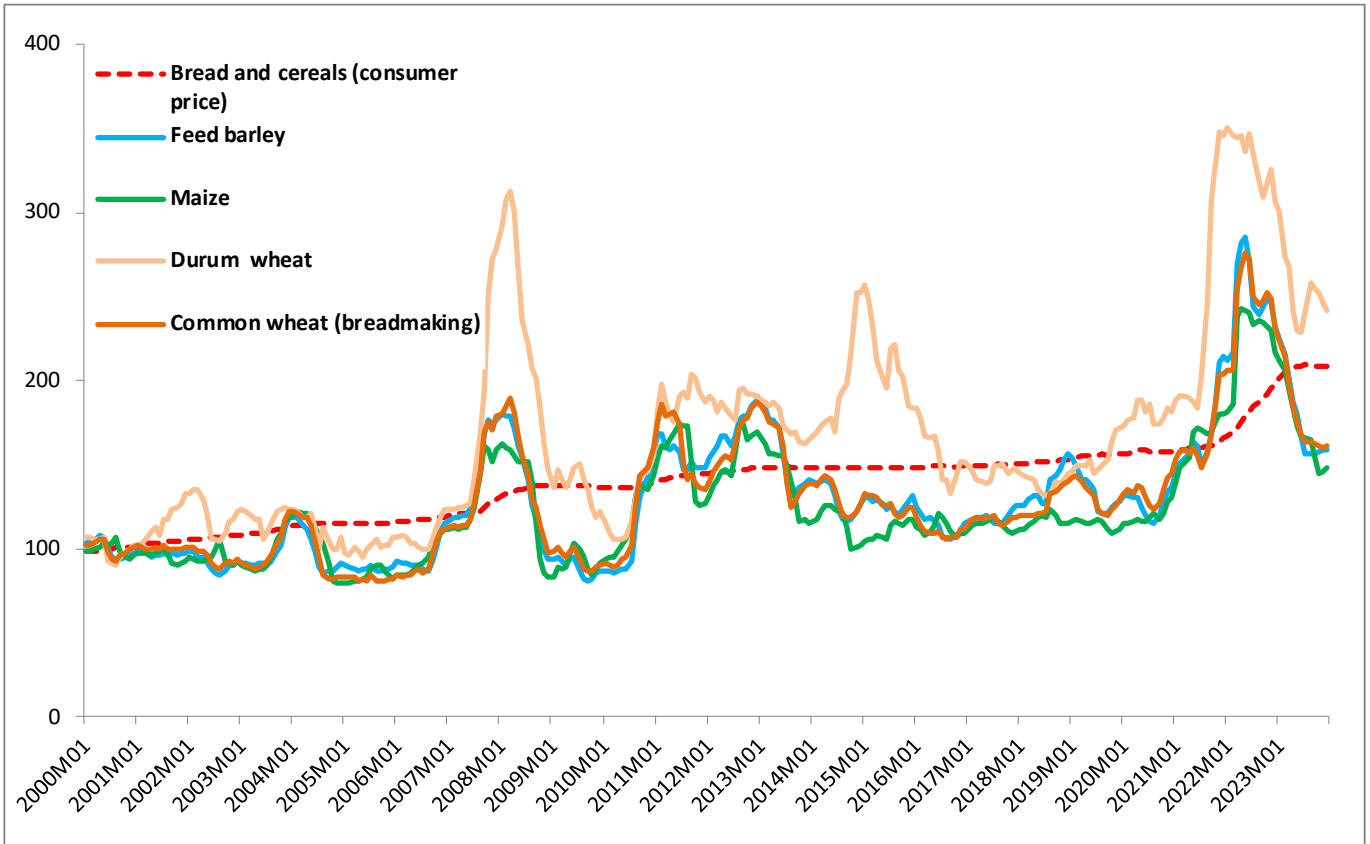


Chart 4. Cereals: international price developments (January 2000 until December 2023, 2000=100, based on USD)

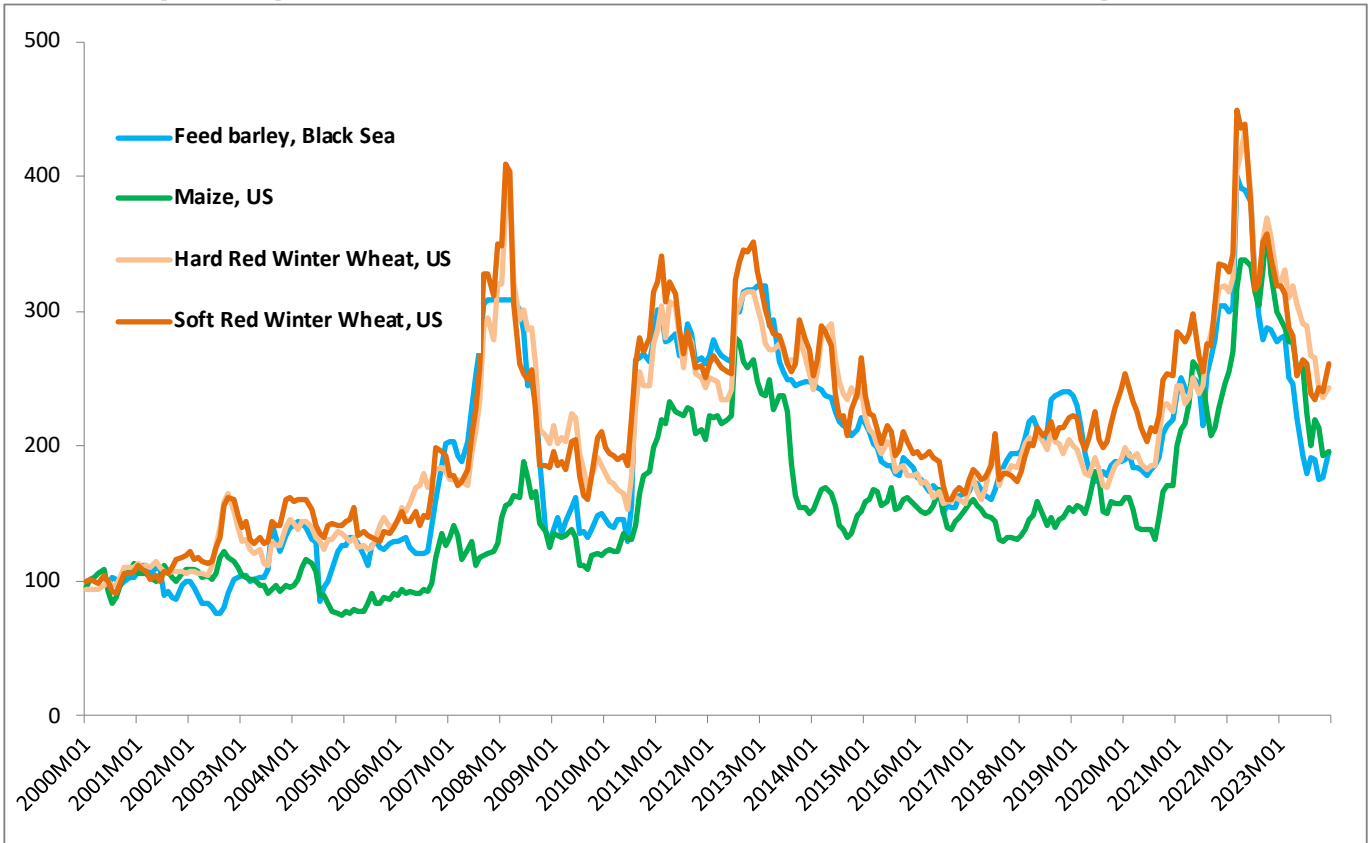


Chart 5. Meat: EU agricultural market and consumer price developments (January 2000 until December 2023, 2000=100)

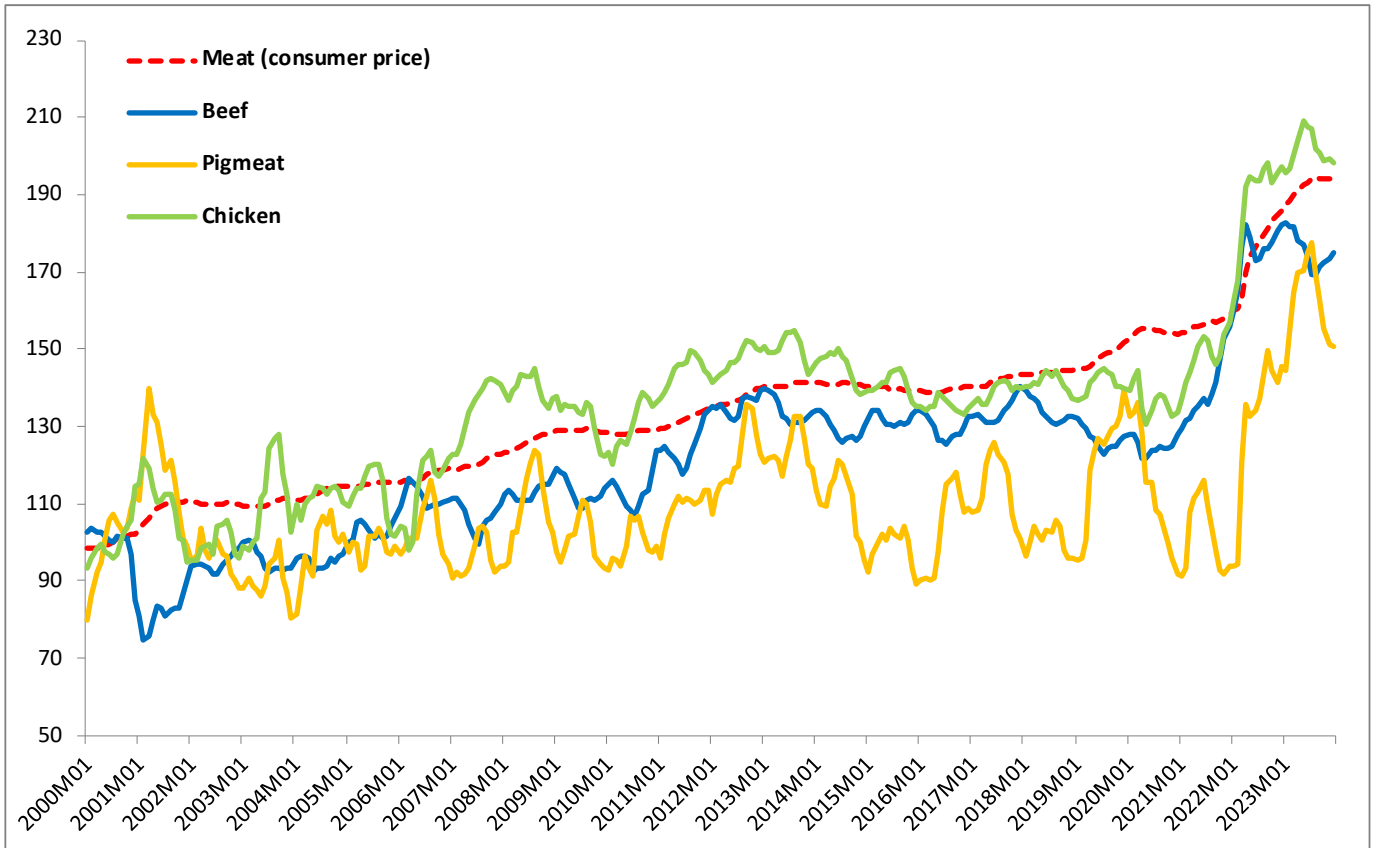


Chart 6. Meat: international price developments (January 2000 until December 2023, 2000=100, based on USD)

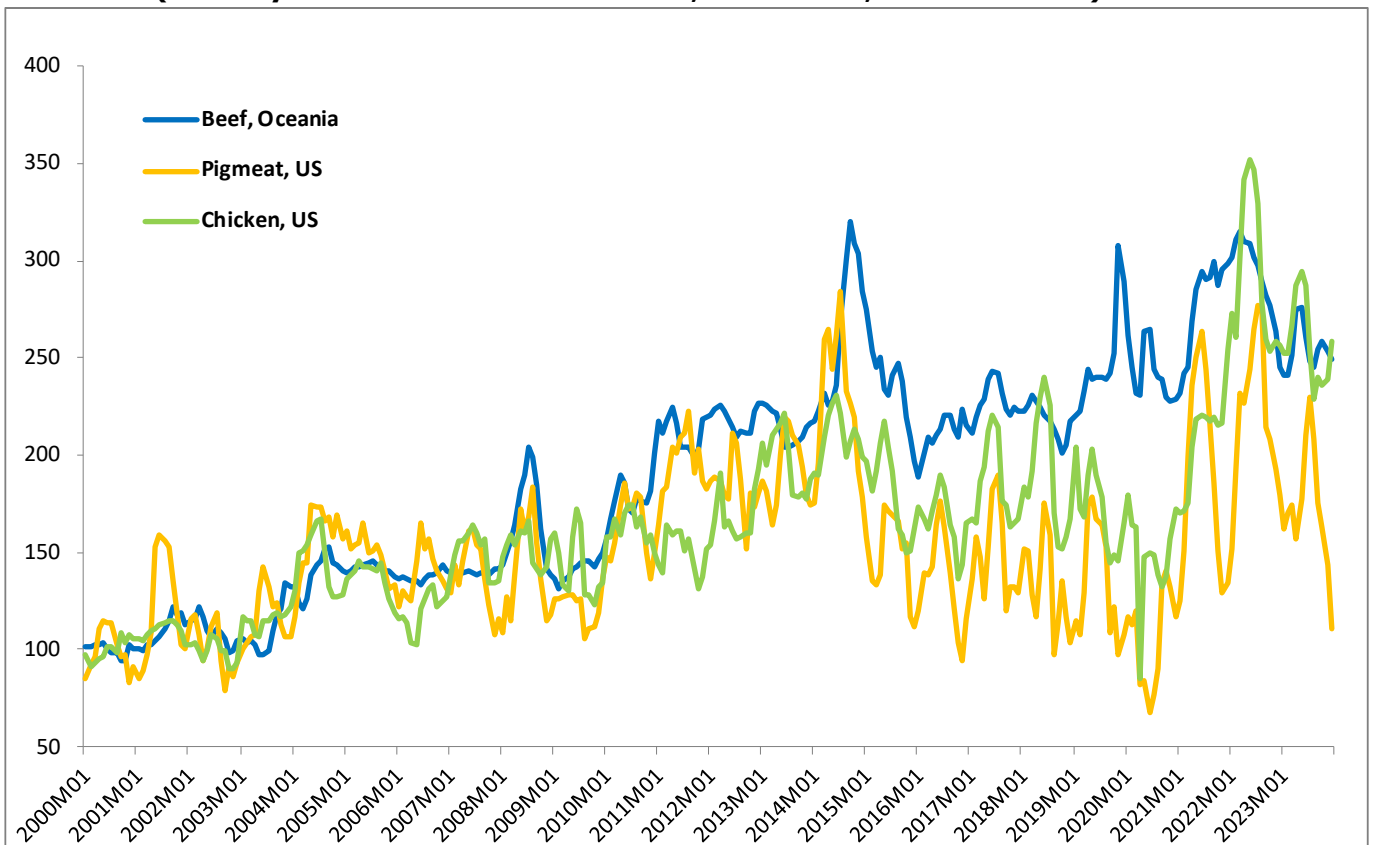


Chart 7. Dairy: EU agricultural market and consumer price developments (January 2000 until December 2023, 2000=100)

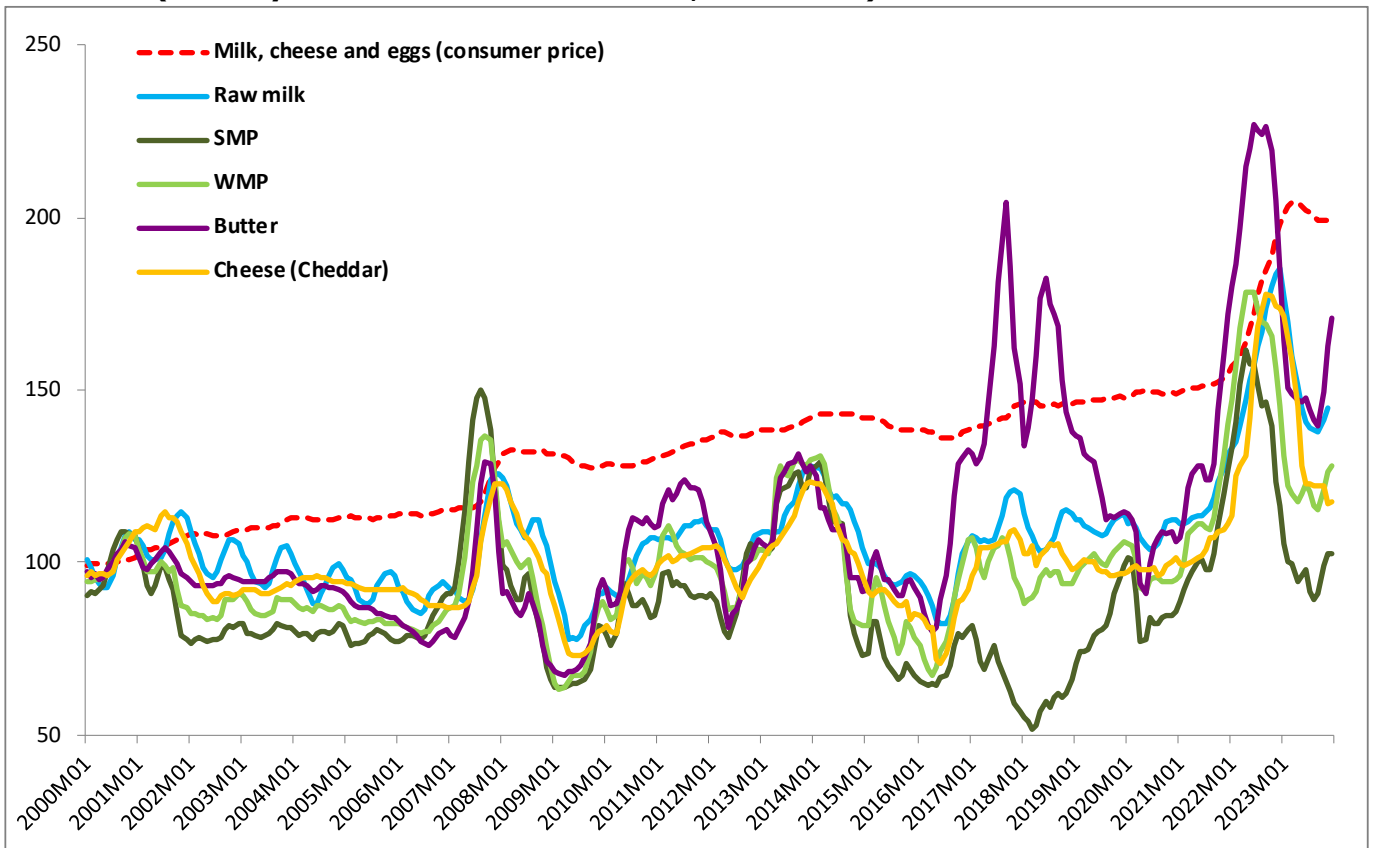
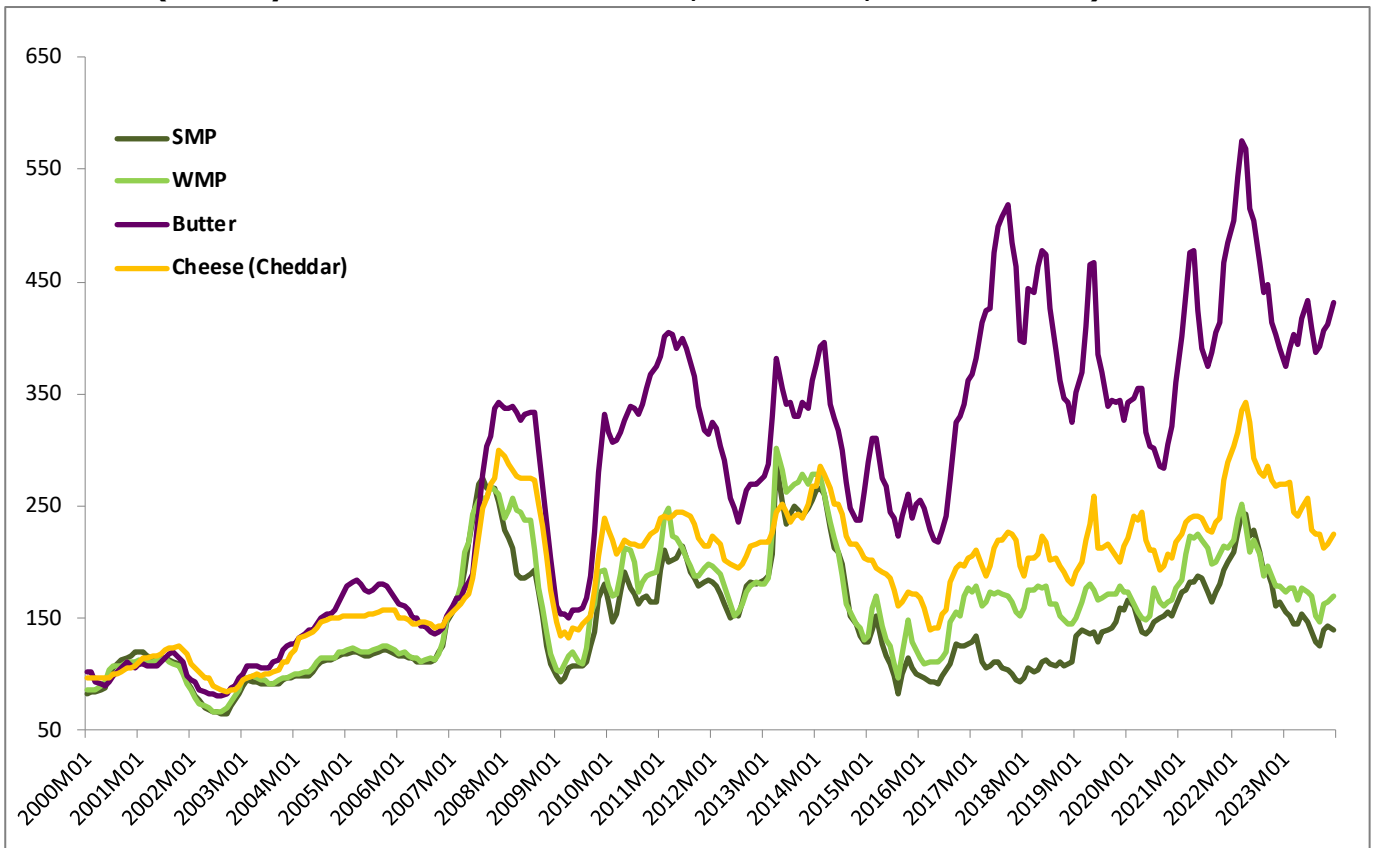


Chart 8. Dairy: international price developments (Oceania) (January 2000 until December 2023, 2000=100, based on USD)



Annex 2

Description of the price series used

PRICES IN ABSOLUTE TERMS

European Union

Unless stated otherwise, all EU prices are averages for the current composition of 27 Member States, including prices before the date of the withdrawal of the UK from the EU.

A monthly average of absolute prices for plant, dairy and animal representative products (including their description) is published and available on the internet at: http://ec.europa.eu/agriculture/markets-and-prices/price-monitoring/monthly-prices/index_en.htm

As regards the cereal sector, representative market prices are used when comparing EU and World prices in page 1: Rouen (soft wheat and barley), Port-La-Nouvelle (durum wheat) and Bordeaux (maize).

EU pigmeat prices class E - change in definition following the implementation of the new single CMO regulation (as of 01.01.2014, more than 55% but less than 60% lean meat compared to 55% or more lean meat, until the before mentioned date) and a new class, S, became compulsory to cover pig carcasses with more than 60% lean meat.

Dairy - prices are based on MS notifications on the basis of which the EU weighted averages are calculated.

Rice – Japonica Italy and Indica Italy (DG Agriculture and Rural Development data based on EU Member States communications)

Sugar – white sugar (DG Agriculture and Rural Development based on EU sugar producers and refiners communications)

Rapeseed – CIF Hamburg, Europe "00" (USDA, OilWorld)

Sources: DG Agriculture and Rural Development (data communicated by EU Member States) and USDA Report on Oilseeds: World, markets and trade available at <https://apps.fas.usda.gov/psdonline/circulars/oilseeds.pdf>.

World

Wheat - US No.2, Hard Red Winter ord. Prot, US Fob Gulf (International Grain Council) and US No.2, Soft Red Winter Wheat, US Gulf (USDA)

Barley - Black Sea Feed fob (International Grain Council)

Maize - US no 2 Yellow Corn, export price fob Gulf (USDA)

Soya beans (US), c.i.f. Rotterdam (USDA, OilWorld)

Beef meat – Meat, beef (Australia/New Zealand), chucks and cow forequarters, frozen boneless, 85% chemical lean, c.i.f. U.S. port (East Coast), ex-dock, beginning November 2002; previously cow forequarters (World Bank)

Poultry meat - DG Agriculture and Rural Development calculation based on USDA weekly quotations for fresh chicken grade A, Chicago

Pigmeat – DG Agriculture and Rural Development calculation based on USDA weekly quotations for US "National Negotiated Swine. Weighted Average Price, Negotiated Carcass"

Butter - Oceania, indicative export prices, f.o.b. (AHDB calculated average of mid-point of price ranges reported bi-weekly, Dairy Market News, USDA)

Cheddar Oceania, indicative export prices, f.o.b. (AHDB average of mid-point of price ranges reported bi-weekly, Dairy Market News, USDA)

SMP Oceania, indicative export prices, f.o.b. (AHDB average of mid-point of price ranges reported bi-weekly, Dairy Market News, USDA)

WMP Oceania, indicative export prices, f.o.b. (AHDB average of mid-point of price ranges reported bi-weekly, Dairy Market News, USDA)

Rice – Japonica US Medium California 4% and Indica Thai Milled 5% Broken ("Creed market report"), simple average of weekly quotations

Sugar – London white sugar 05, nearby (closing), average of daily quotations (London International Financial Futures and Options Exchange)

Sources for world prices: World Bank (Commodity Price Data, Pink Sheet), FAO, USDA, OilWorld

<https://www.fao.org/giews/food-prices>

<https://www.worldbank.org/en/research/commodity-markets>.

AGRICULTURAL INPUT PRICES

Energy – Crude oil, UK Brent 38` API and US, West Texas Intermediate (WTI) 40` API; Natural gas (Europe) average import border price and a spot price component, beginning April 2010 including UK and Natural Gas (U.S.), spot price at Henry Hub, Louisiana.

Fertilizers - Diammonium phosphate, spot, f.o.b. US Gulf, Phosphate rock, f.o.b. North Africa, Potassium chloride (muriate of potash), spot, f.o.b. Vancouver, TSP (triple superphosphate), spot, import US Gulf, Urea, (Ukraine), f.o.b. Black Sea.

Source for input prices: World Bank (Commodity Price Data, Pink Sheet)

<https://www.worldbank.org/en/research/commodity-markets>.

FOOD PRICE INDICES

1. EU consumer food price indices

The EU consumer food price index measures the change over time of the prices of consumer goods and services acquired by households. The food products included in this index are those purchased for consumption at home and include the following categories: "bread and cereals", "meat", "milk, cheese and eggs", "oils and fats", and "sugar, jam, honey, chocolate and confectionery".

A detailed description of its composition can be found on Eurostat website at:

https://ec.europa.eu/eurostat/cache/metadata/en/prc_hicp_esms.htm.

2. FAO food price index

The FAO Food Price Index is a measure of the monthly change in international prices of a basket of food commodities. It consists of the average of five commodity group price indices (representing 55 quotations), weighted with the average export shares of each of the groups for 2002-2004.

A detailed description of its composition can be found at:

<http://www.fao.org/worldfoodsituation/foodpricesindex/en/>

3. World Bank food price index

The World Bank calculates commodity price indices for low and middle income countries (2010=100, 2002-2004 export value weights). The food index includes fats and oils, grains and other food (meat, sugar, etc) items.

A detailed description of its composition can be found at:

<http://www.worldbank.org/en/research/commodity-markets>