

## PRICE DASHBOARD

### No 129 – February 2023 edition

This price dashboard provides a monthly summary of price data for the most representative agricultural inputs, agricultural products and consumer food prices, at EU and world level. Although not all the products are comparable at both EU and world level, this document is intended to give an indication on the most recent price developments.

Date of publication: 27.03.2023

### AGRICULTURAL COMMODITY PRICES – February 2023

Agricultural Commodity	EUROPEAN UNION 27			WORLD			
	Monthly average	Annual change	Monthly change	Monthly average		Annual change	Monthly change
<b>CEREALS</b> <sup>(1)</sup>	<b>EUR/T</b>	<b>%</b>	<b>%</b>	<b>USD/T</b>	<b>EUR/T</b>	<b>%</b>	<b>%</b>
Soft wheat	292	5.9%	-1.7%	312 <sup>(2)</sup>	291	-8.1%	-0.5%
Durum wheat	430	-3.8%	-6.6%	395 <sup>(3)</sup>	368	1.1%	3.8%
Maize	296	14.1%	3.2%	298	278	1.8%	-1.6%
Barley	276	4.0%	1.4%	279	260	-6.7%	0.9%
<b>MEAT</b>							
Beef	5,137	9.8%	-0.7%	5,079	4,740	-18.2%	4.5%
Pork	2,175	64.5%	7.3%	1,672 <sup>(6)</sup>	1,560 <sup>(6)</sup>	-11.8%	4.8%
Poultry	2,649	17.5%	0.5%	2,683	2,504	-3.3%	-0.1%
<b>DAIRY</b>							
Butter	4,950	-16.7%	-6.3%	4,708	4,394	-28.1%	4.3%
Cheese	4,572	25.8%	-1.6%	4,988	4,655	-14.1%	0.8%
SMP	2,589	-28.1%	-4.5%	2,850	2,660	-32.8%	-1.7%
WMP	3,555	-21.4%	-6.2%	3,258	3,041	-26.4%	1.8%
<b>OILSEEDS</b>							
Soya beans	:	:	:	651 <sup>(5)</sup>	608	-2.7%	0.5%
Rapeseed	549 <sup>(5)</sup>	-22.5%	-1.5%	:	:	:	:
<b>SUGAR</b>							
White sugar	773 <sup>(4)</sup>	78.5%	18.0%	566	528	14.8%	3.1%
<b>RICE (milled)</b>							
Japonica	1,260	8.6%	-13.7%	1,700	1,587	37.9%	3.7%
Indica	900	13.9%	0.0%	463	432	15.2%	-2.8%

#### Notes:

Changes in world prices are based on prices expressed in USD.

1) EU cereal quotations: soft wheat and barley (delivered Rouen), durum wheat (Port-La-Nouvelle/La Palice) and maize (Bordeaux).

2-3) US Soft Red Winter Wheat and US Hard Red Winter Wheat.

4) Figures for previous month.

5) Preliminary price.

6) World pork price is represented by US, as it is the biggest world exporter after the EU.

For any comments and questions please contact us at the e-mail address [AGRI-A2@ec.europa.eu](mailto:AGRI-A2@ec.europa.eu)

## FOOD PRICE INDICES – February 2023

### European Union, Eurostat index, 2005=100

EU-27 consumer food prices, index 2005=100	Monthly average	Annual change	Monthly change
<b>FOOD</b>	<b>173.1</b>	<b>19.5%</b>	<b>1.9%</b>
Bread and cereals	177.1	20.8%	1.5%
Meat	163.5	17.3%	0.5%
Milk, cheese and eggs	179.5	28.4%	0.9%
Fats and oils	208.7	27.2%	-0.9%
Sugar	151.2	18.4%	1.4%

### FAO index, 2002-2004=100

FAO food prices, index 2002-2004=100	Monthly average	Annual change	Monthly change
<b>FOOD</b>	<b>129.8</b>	<b>-8.1%</b>	<b>-0.6%</b>
Cereals	147.3	1.4%	-0.1%
Meat	112.0	-1.7%	-0.1%
Dairy	131.3	-7.2%	-2.7%
Fats and oils	135.9	-32.6%	-3.2%
Sugar	124.9	13.0%	6.9%

### World Bank index, 2010=100

World Bank commodity prices, index 2010=100	Monthly average	Annual change	Monthly change
<b>FOOD</b>	<b>137.4</b>	<b>-2.8%</b>	<b>1.0%</b>
Oils and meals	129.6	-16.3%	0.2%
Grains	145.5	5.0%	-0.6%
Other food	140.3	11.3%	3.8%

### AGRICULTURAL INPUT PRICES

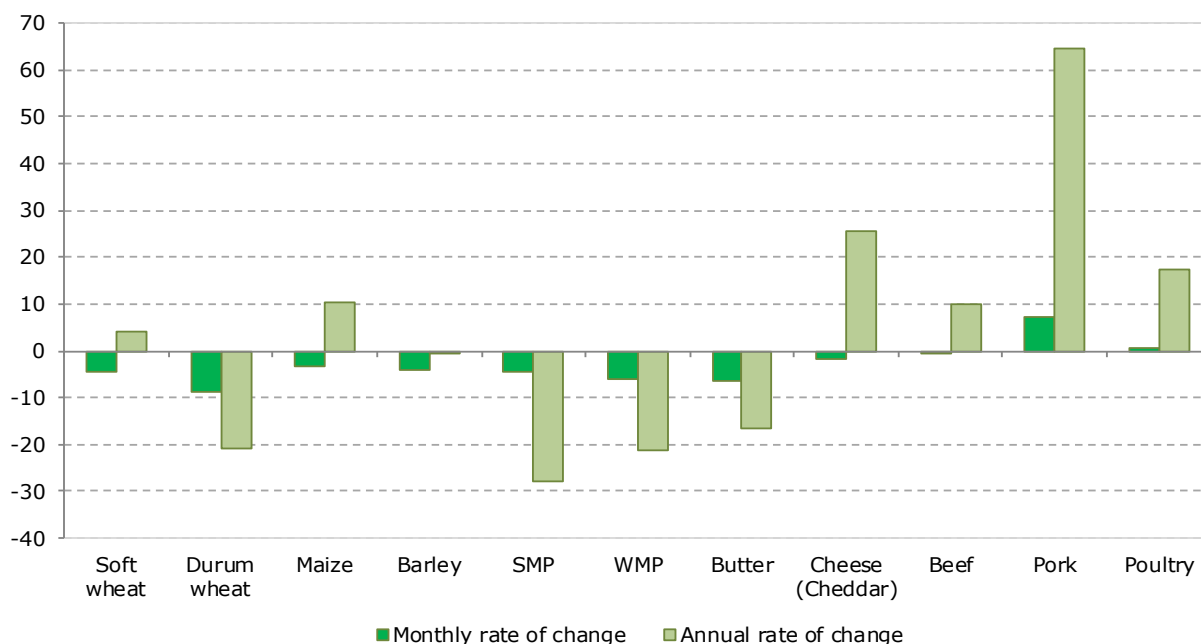
Agricultural input index 2010=100	Monthly average	Annual change	Monthly change
<b>ENERGY</b>	<b>110.6</b>	<b>-17.0%</b>	<b>-7.3%</b>
Crude oil, Brent (USD/bbl)	82.7	-13.6%	-0.5%
Crude oil, WTI (USD/bbl)	76.8	-16.2%	-1.6%
Natural gas, Europe (USD/mmbtu)	16.5	-39.3%	-18.1%
Natural gas, US (USD/mmbtu)	2.4	-48.8%	-27.2%
<b>FERTILIZERS</b>	<b>167.9</b>	<b>-14.5%</b>	<b>-5.6%</b>
Phosphate rock (USD/mt)	322.5	87.0%	7.5%
Diammonium phosphate (USD/mt)	612.5	-18.0%	-2.9%
Potassium chloride (USD/mt)	562.5	43.6%	0.0%
Triple superphosphate (USD/mt)	547.5	-19.5%	-3.8%
Urea (USD/mt)	357.5	-52.0%	-19.4%

Please refer to Annex 1 and 2 for detailed data and graphs on EU price developments (for agricultural commodities and food) and commodity world quotations, as well as a description of the data used and their sources.

## Annex 1

### Agricultural commodity prices

**Chart 1. Monthly and annual changes in agricultural commodity prices in EU-27  
(%, February 2023 compared to January 2023 and to February 2022)**



**Table 1. Monthly changes in agricultural commodity prices in EU-27  
(%, February 2023 compared to January 2023)**

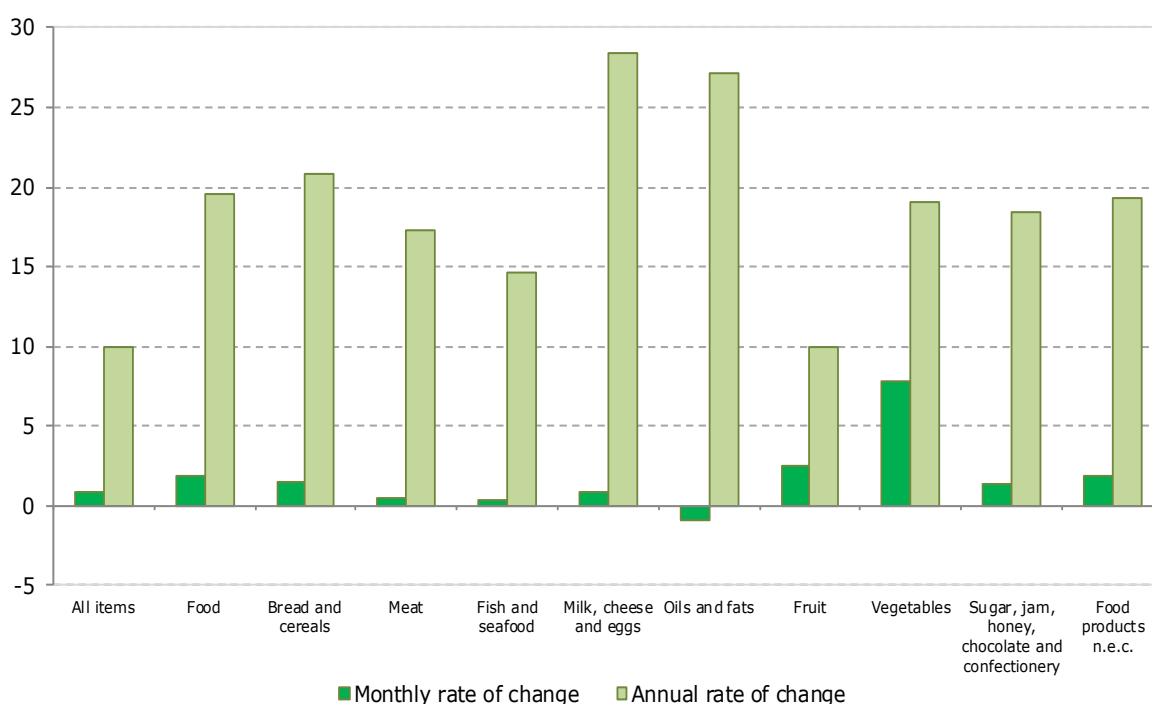
	Soft wheat	Durum wheat	Maize	Barley	SMP	WMP	Butter	Cheese (Cheddar)	Beef	Pork	Poultry
<b>EU 27</b>	<b>-4.3</b>	<b>-8.9</b>	<b>-3.2</b>	<b>-4.1</b>	<b>-4.5</b>	<b>-6.2</b>	<b>-6.3</b>	<b>-1.6</b>	<b>-0.7</b>	<b>7.3</b>	<b>0.5</b>
Belgium			2.8	-0.6	-3.0	-4.3	1.4		0.1	9.6	-1.3
Bulgaria	-5.1		0.1	4.7					0.0	0.9	-0.7
Czechia	-5.4				-7.5	-4.7	-15.3			5.1	1.1
Denmark			0.2	-1.4					-5.1	-3.4	
Germany	-3.2		-2.6	-4.7	-0.5	-5.0	1.6		-2.1	9.4	0.0
Estonia	-2.5			-4.0			-15.2			5.1	
Ireland				-0.5					2.1	-2.0	1.4
Greece	-5.8	-2.1	2.3	-1.1					-1.1	3.9	1.6
Spain	-1.9	-13.2	-1.4	-2.9			-3.5		-0.2	6.8	-2.9
France	-1.6	-2.5	2.1	1.6					0.1	8.8	0.0
Croatia	-1.8		-1.8						1.3	7.4	-1.2
Italy	-5.6	-10.6	-4.3	-7.3			-7.4		5.0		-4.2
Cyprus			-8.4	-6.8						2.3	-0.1
Latvia	-0.4			4.3					0.7	6.9	
Lithuania	-3.4			-7.2					-4.6	5.4	0.1
Luxembourg										8.4	
Hungary	-5.6		-12.1	-18.7						6.1	2.1
Malta										-0.4	0.0
Netherlands			-0.5	-0.8	0.6	-3.9	4.0		8.8	13.5	
Austria	-10.9	-4.9	-7.4	-5.8					-2.1	6.9	-0.6
Poland	-5.0		-1.8	-8.3	-11.3	-9.9	-12.1		-1.9	8.4	9.1
Portugal	-4.3		-3.2	-0.5		-6.4			0.3	7.2	-1.2
Romania	-3.1		-0.9	-2.7					10.1	-3.8	2.5
Slovenia	-6.6		4.1						-0.3	6.2	3.1
Slovakia	-7.1		-14.1				-6.2			5.8	1.3
Finland	-5.9			-10.8					-0.2	0.3	-0.1
Sweden	-1.2								1.4	-0.7	4.7

**Table 2. Annual changes in agricultural commodity prices in EU-27  
(%, February 2023 compared to February 2022)**

	Soft wheat	Durum wheat	Maize	Barley	SMP	WMP	Butter	Cheese (Cheddar)	Beef	Pork	Poultry
<b>EU 27</b>	<b>4.1</b>	<b>-20.8</b>	<b>10.5</b>	<b>-0.2</b>	<b>-28.1</b>	<b>-21.4</b>	<b>-16.7</b>	<b>25.8</b>	<b>9.8</b>	<b>64.5</b>	<b>17.5</b>
Belgium			2.3	-10.6	-23.8	-21.4	-20.8		26.3	83.6	13.0
Bulgaria	3.8		9.3	28.1						48.4	14.8
Czechia	13.4				-13.5	21.9	5.7		11.4	68.8	35.6
Denmark			14.9	26.0					7.4	38.1	
Germany	1.7		9.2	0.1	-31.2	-26.8	-23.5		0.5	73.4	20.3
Estonia	7.4			-9.1			-17.0			46.3	
Ireland				-8.3					20.5	39.4	16.7
Greece	41.4	-14.9	8.0	8.6					8.6	55.3	37.2
Spain	9.8	-25.2	10.6	6.1			-2.8		18.9	49.6	15.7
France	6.9		10.7	5.3					15.6	60.6	27.7
Croatia	4.0		14.6	31.9					15.9	64.4	25.9
Italy	0.9	-21.5	7.1	-6.7			-22.3		22.5		-10.2
Cyprus			8.9	4.1						30.1	-0.1
Latvia	1.6			-7.0					16.0	101.7	
Lithuania	5.1		18.4	-0.5					1.7	85.1	28.6
Luxembourg										70.4	
Hungary	-4.8		-0.5	-17.5						67.4	40.5
Malta										12.6	8.6
Netherlands			6.6	0.3	-32.0	-27.7	-22.1		-4.3	77.0	
Austria	-5.6	-26.0	8.2	-0.6					8.4	59.9	21.4
Poland	-0.3		11.3	-2.4	-23.0	-10.9	-16.8		5.7	80.4	9.4
Portugal			7.2	-7.3		38.9			14.0	69.0	13.0
Romania	-0.2		12.4	7.1					33.3	57.4	23.5
Slovenia	4.9		24.5						18.3	53.6	24.2
Slovakia	12.9		6.8				14.5			65.8	20.9
Finland	-6.5			-21.9					23.5	29.0	7.2
Sweden	5.9								10.7	17.7	14.4

## Food consumer prices

**Chart 2. Monthly and annual changes in food consumer prices in EU-27  
(%, February 2023 compared to January 2023 and to February 2022)**



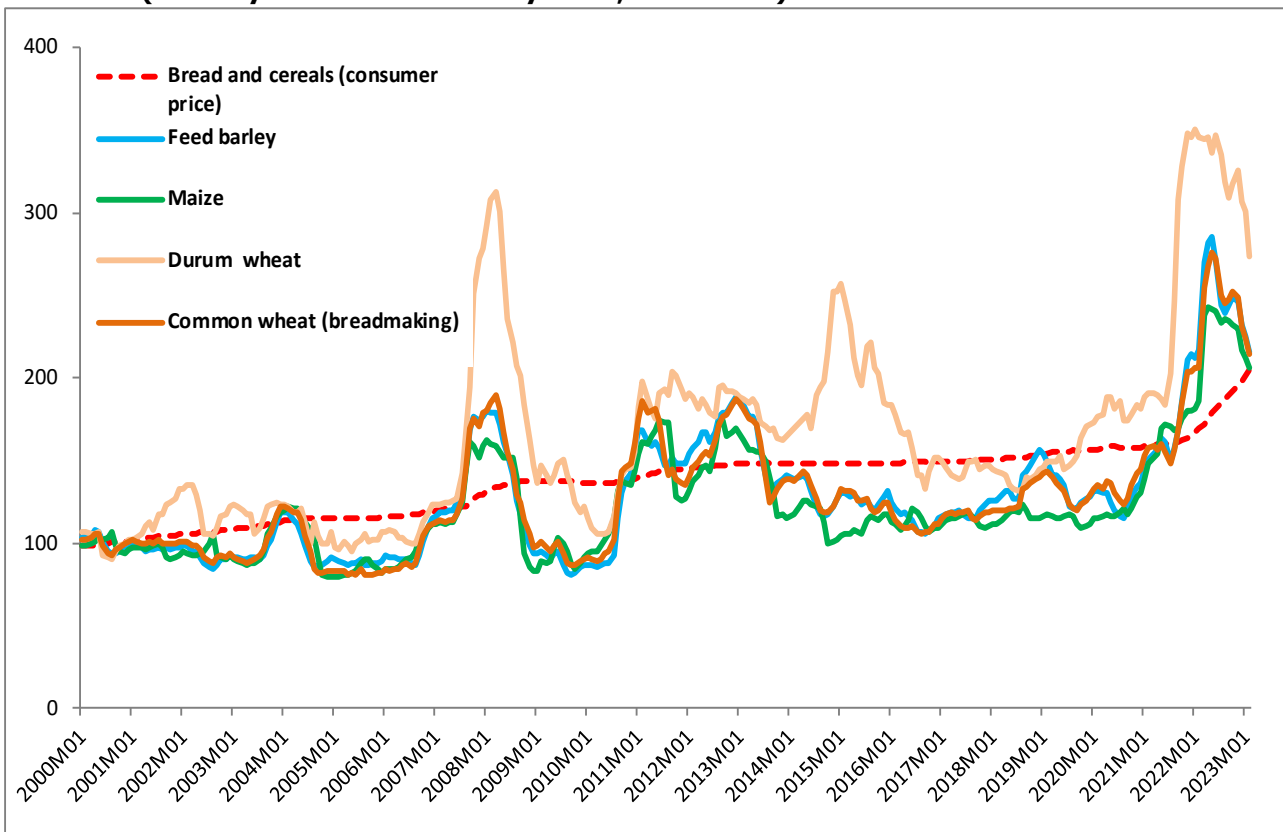
**Table 3. Monthly changes in food consumer prices in EU-27  
(%, February 2023 compared to January 2023)**

	All items	Food	Bread and cereals	Meat	Fish and seafood	Milk, cheese and eggs	Oils and fats	Fruit	Vegetables	Sugar, jam, honey, chocolate and confectionery	Food products n.e.c.
<b>European Union 27</b>	<b>0.8</b>	<b>1.9</b>	<b>1.5</b>	<b>0.5</b>	<b>0.3</b>	<b>0.9</b>	<b>-0.9</b>	<b>2.5</b>	<b>7.8</b>	<b>1.4</b>	<b>1.9</b>
Belgium	0.3	1.9	1.9	1.1	0.8	2.7	1.0	3.3	4.7	-0.9	4.0
Bulgaria	0.7	2.3	0.7	0.8	2.7	0.9	-1.5	1.5	9.6	3.3	2.0
Czechia	0.8	0.6	0.8	-2.0	0.6	0.6	-6.6	2.7	12.5	-1.5	1.8
Denmark	0.8	2.5	2.5	1.1	1.8	3.4	5.4	2.8	2.1	2.7	2.0
Germany	1.0	2.5	2.2	0.2	2.1	0.7	-7.0	2.7	12.4	0.9	1.9
Estonia	0.7	1.7	1.4	-1.0	1.9	1.9	0.2	-0.2	7.9	1.0	2.9
Ireland	1.5	1.1	1.7	0.7	0.9	0.9	1.2	0.7	1.6	1.7	1.5
Greece	0.2	1.4	-0.1	0.7	-0.1	1.4	1.7	1.2	6.5	0.7	-1.3
Spain	0.9	1.8	1.6	0.5	-1.7	0.1	1.8	4.5	6.7	3.7	2.9
France	1.1	1.8	1.2	0.9	-1.5	1.3	1.1	2.7	6.4	2.1	1.2
Croatia	0.3	0.4	0.3	-1.0	-0.2	-1.1	-3.5	1.0	6.0	2.4	-0.3
Italy	0.1	1.8	1.1	0.2	0.9	0.9	2.5	1.8	6.9	0.8	0.8
Cyprus	0.8	4.0	0.6	0.4	1.6	0.0	1.1	6.2	26.0	1.5	-0.5
Latvia	0.6	1.0	-0.6	-1.2	1.6	-1.6	-3.0	4.5	14.1	1.8	-0.4
Lithuania	0.7	0.7	-0.2	0.4	1.5	-1.2	-2.7	1.1	8.5	-0.2	2.1
Luxembourg	1.4	1.9	2.0	1.1	0.9	1.8	1.7	-0.1	6.3	1.5	2.4
Hungary	0.8	1.3	0.9	0.3	0.7	0.4	-0.4	1.4	8.5	1.9	1.3
Malta	0.9	2.2	1.4	0.1	2.9	0.1	1.6	0.7	12.9	0.9	1.4
Netherlands	1.3	2.2	2.4	1.0	2.4	2.0	-0.8	3.1	4.2	1.0	2.4
Austria	0.8	1.7	1.5	1.3	-0.6	1.6	-3.7	1.9	5.9	1.8	1.0
Poland	1.1	2.2	2.1	0.4	1.1	0.9	-3.5	2.3	7.6	1.4	2.3
Portugal	0.4	1.5	1.7	0.3	0.4	-0.1	4.5	0.5	6.5	1.5	2.6
Romania	1.0	2.0	1.1	1.1	2.6	1.4	-0.9	2.7	6.4	0.9	1.4
Slovenia	0.6	1.4	3.1	0.3	0.8	1.0	-2.6	-1.5	5.0	0.4	1.5
Slovakia	1.1	1.7	2.0	0.0	2.4	0.8	0.1	-1.5	9.9	2.4	2.3
Finland	0.7	2.6	1.9	2.8	5.4	2.8	1.1	2.1	6.8	0.3	0.7
Sweden	1.0	2.8	1.9	0.8	1.8	1.2	-1.4	3.1	11.0	2.6	1.4

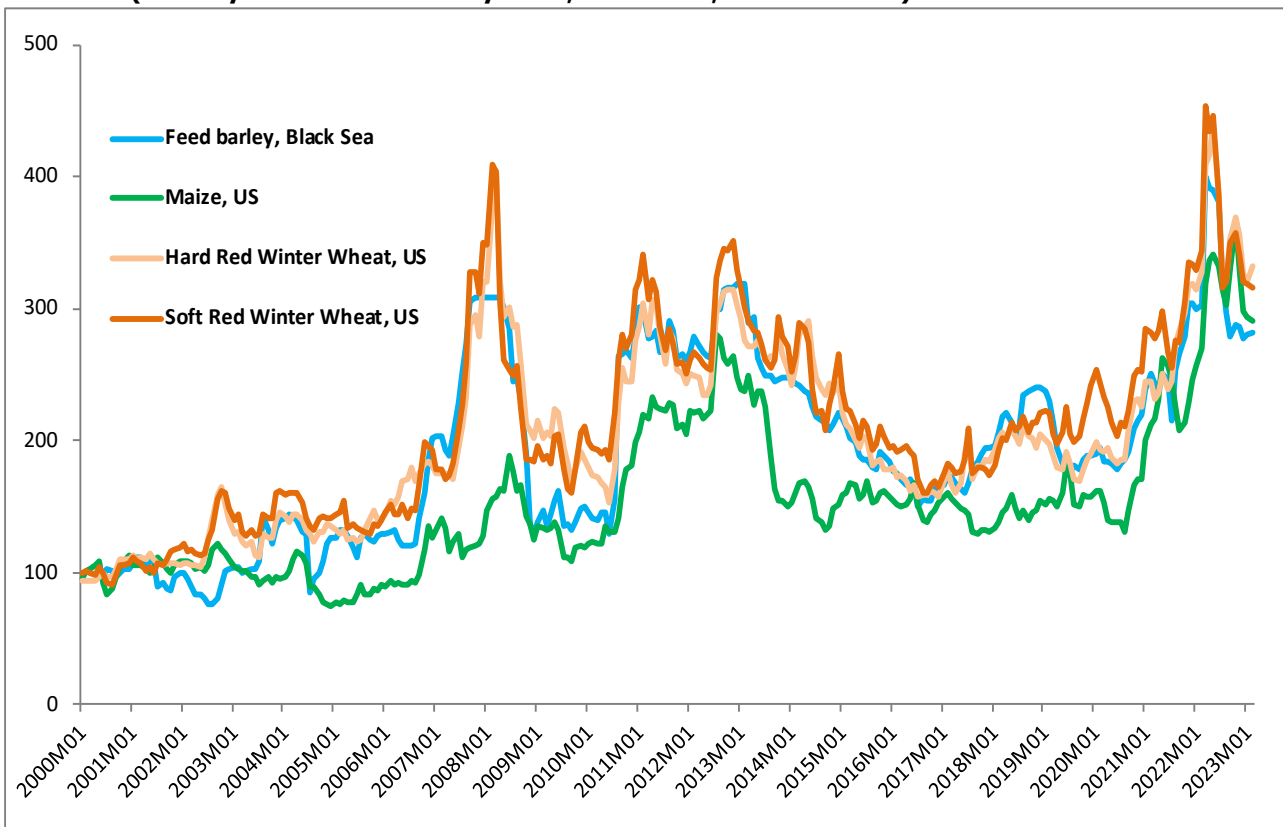
**Table 4. Annual changes in food consumer prices in EU-27  
(%, February 2023 compared to February 2022)**

	All items	Food	Bread and cereals	Meat	Fish and seafood	Milk, cheese and eggs	Oils and fats	Fruit	Vegetables	Sugar, jam, honey, chocolate and confectionery	Food products n.e.c.
<b>European Union 27</b>	<b>9.9</b>	<b>19.5</b>	<b>20.8</b>	<b>17.3</b>	<b>14.6</b>	<b>28.4</b>	<b>27.2</b>	<b>10.0</b>	<b>19.1</b>	<b>18.4</b>	<b>19.3</b>
Belgium	5.4	19.9	21.7	16.1	16.7	30.4	30.7	11.4	22.9	15.3	18.5
Bulgaria	13.7	25.0	17.1	27.4	17.8	38.3	17.4	7.2	17.6	29.9	29.4
Czechia	18.4	25.2	26.4	23.2	18.1	33.5	22.9	14.4	22.3	27.5	23.0
Denmark	8.3	15.3	15.8	14.4	13.2	23.1	24.3	6.3	11.3	15.1	12.8
Germany	9.3	22.3	24.6	19.0	22.5	35.4	22.9	8.3	21.8	14.3	23.6
Estonia	17.8	25.8	29.2	28.0	26.0	26.0	20.9	14.7	18.4	26.2	36.5
Ireland	8.1	13.3	13.7	14.4	10.5	20.4	19.7	8.6	9.3	11.5	11.8
Greece	6.5	14.7	16.9	20.0	2.5	25.2	23.0	-0.2	8.2	9.3	13.1
Spain	6.0	16.7	18.8	14.0	10.9	25.3	32.9	5.8	20.4	18.9	18.4
France	7.3	16.1	14.4	15.4	13.7	20.4	29.9	10.0	19.9	13.4	13.6
Croatia	11.7	17.9	26.0	14.4	14.6	25.9	5.3	7.4	10.2	21.2	17.9
Italy	9.8	13.5	16.9	9.9	10.4	19.9	29.2	5.5	10.5	17.2	13.9
Cyprus	6.7	9.1	12.6	17.8	11.8	15.2	31.1	-8.0	-2.9	13.1	9.2
Latvia	20.1	25.4	30.6	23.8	23.7	24.4	22.8	18.9	21.4	29.3	28.0
Lithuania	17.2	29.7	36.1	28.1	24.8	34.5	29.2	15.2	26.4	30.4	34.5
Luxembourg	4.8	13.5	13.8	12.0	11.3	18.1	24.0	7.6	16.2	10.1	11.8
Hungary	25.8	47.0	59.6	37.7	36.1	69.9	36.4	30.1	38.3	30.5	41.6
Malta	7.0	13.6	11.7	17.6	6.2	13.5	25.4	9.3	12.7	14.9	15.7
Netherlands	8.9	18.4	19.5	17.1	22.0	27.8	27.8	9.6	16.7	15.2	12.5
Austria	11.0	16.5	16.1	18.6	14.7	22.9	17.0	5.5	16.4	14.3	12.7
Poland	17.2	24.5	25.4	26.2	23.4	29.2	21.3	18.5	22.5	25.8	21.4
Portugal	8.6	22.0	20.8	20.3	13.4	29.0	35.0	19.1	33.2	18.6	21.7
Romania	13.4	22.9	23.9	17.8	22.3	31.8	33.9	16.1	23.2	28.8	19.1
Slovenia	9.4	19.0	18.8	18.3	11.4	26.2	30.0	12.7	16.9	13.3	15.7
Slovakia	15.4	28.7	28.0	29.5	19.7	37.1	32.5	14.0	25.6	26.8	27.8
Finland	8.0	17.3	18.0	21.1	18.2	22.2	21.6	11.5	14.1	16.2	11.7
Sweden	9.7	22.6	20.5	17.7	25.0	32.4	37.9	16.0	25.3	17.6	19.0

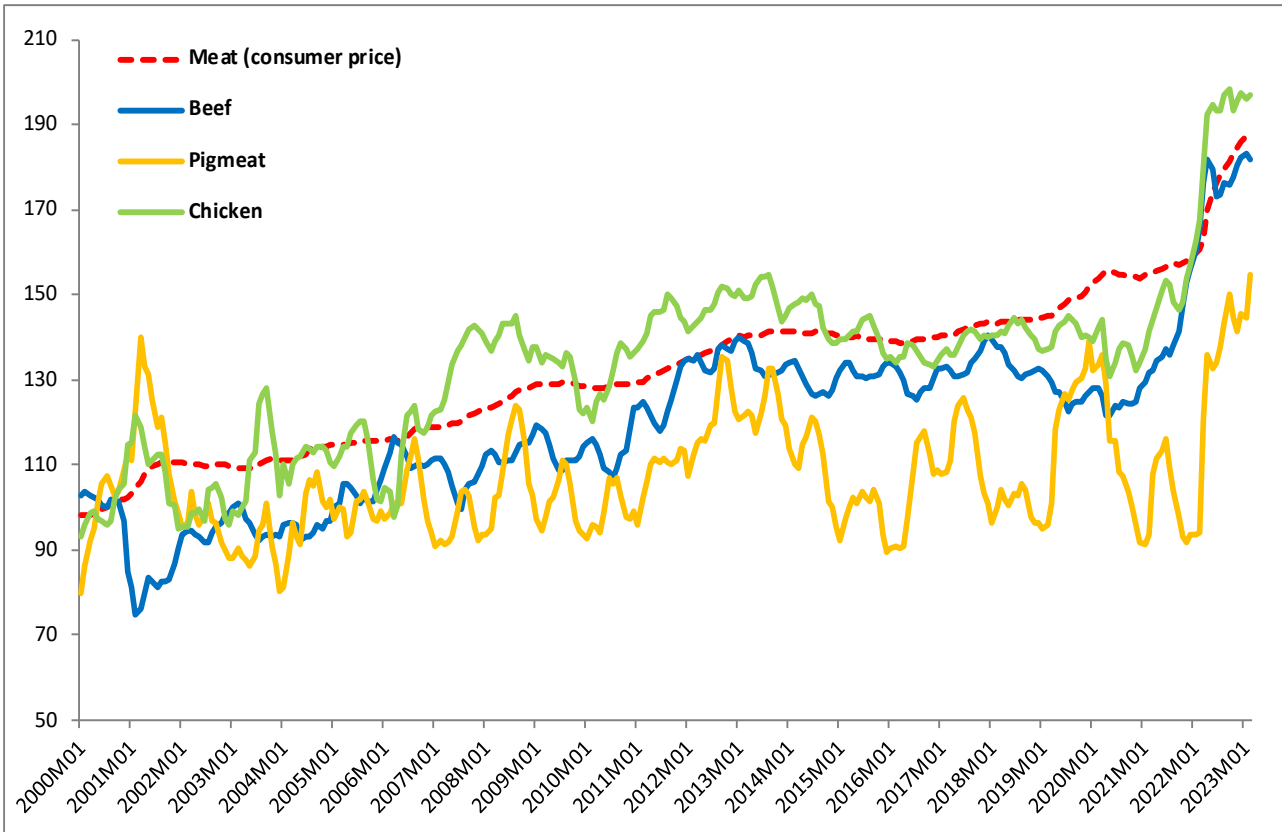
**Chart 3. Cereals/bread and cereals based products: EU agricultural market and consumer price developments (January 2000 until February 2023, 2000=100)**



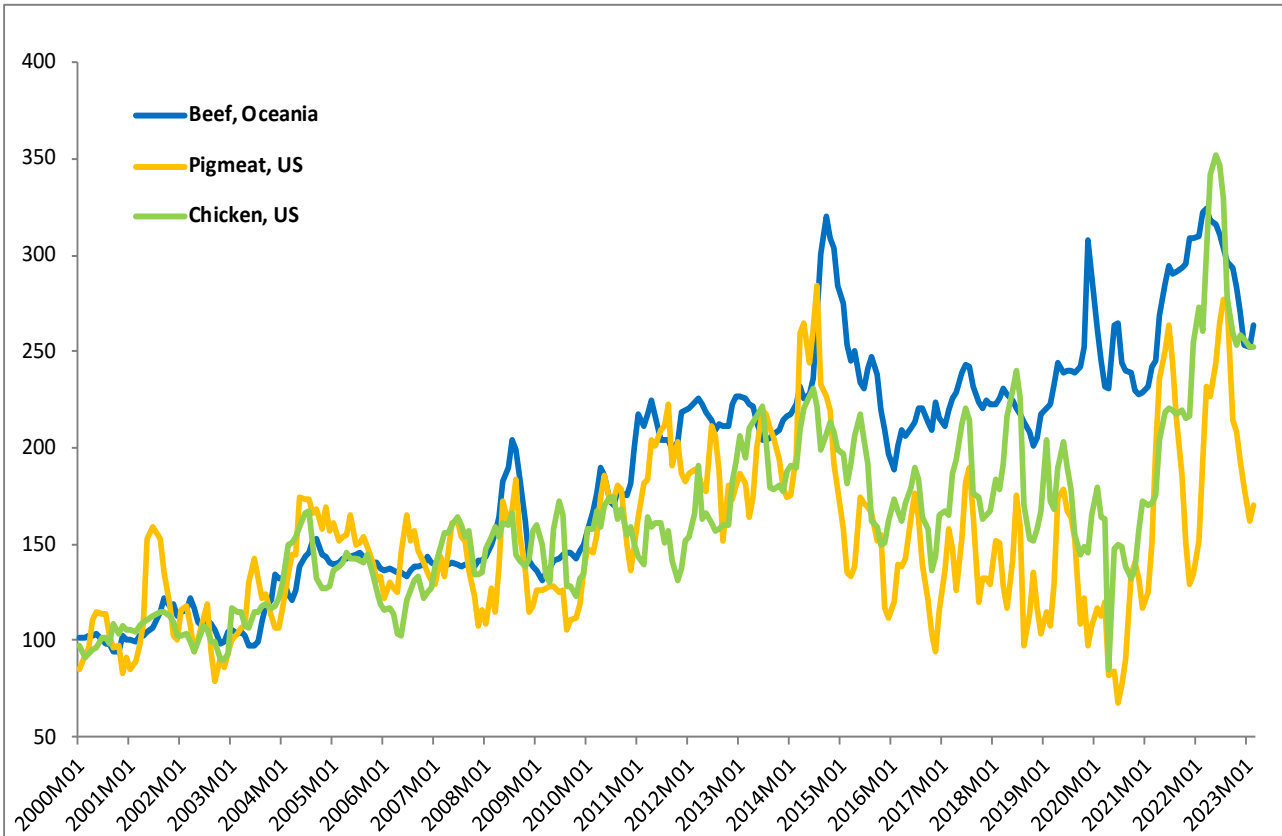
**Chart 4. Cereals: international price developments (January 2000 until February 2023, 2000=100, based on USD)**



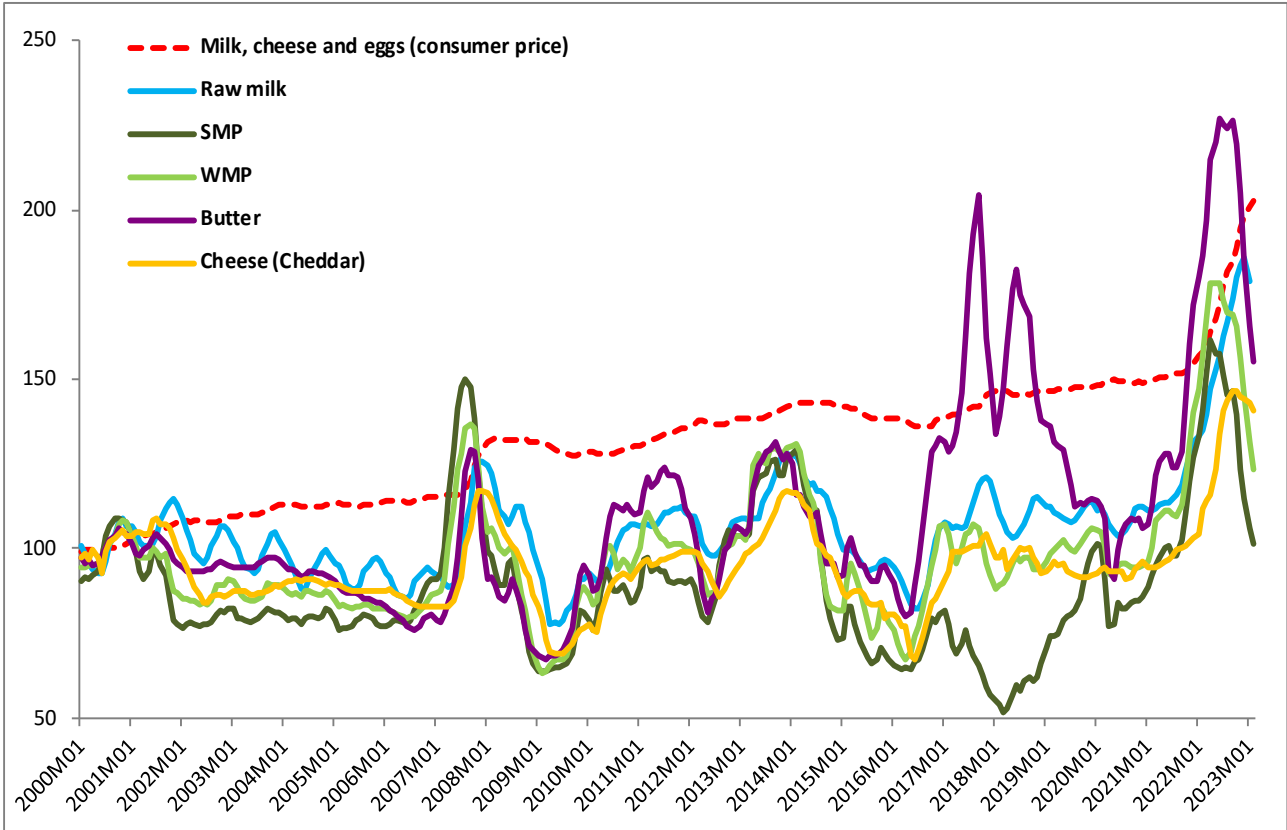
**Chart 5. Meat: EU agricultural market and consumer price developments (January 2000 until February 2023, 2000=100)**



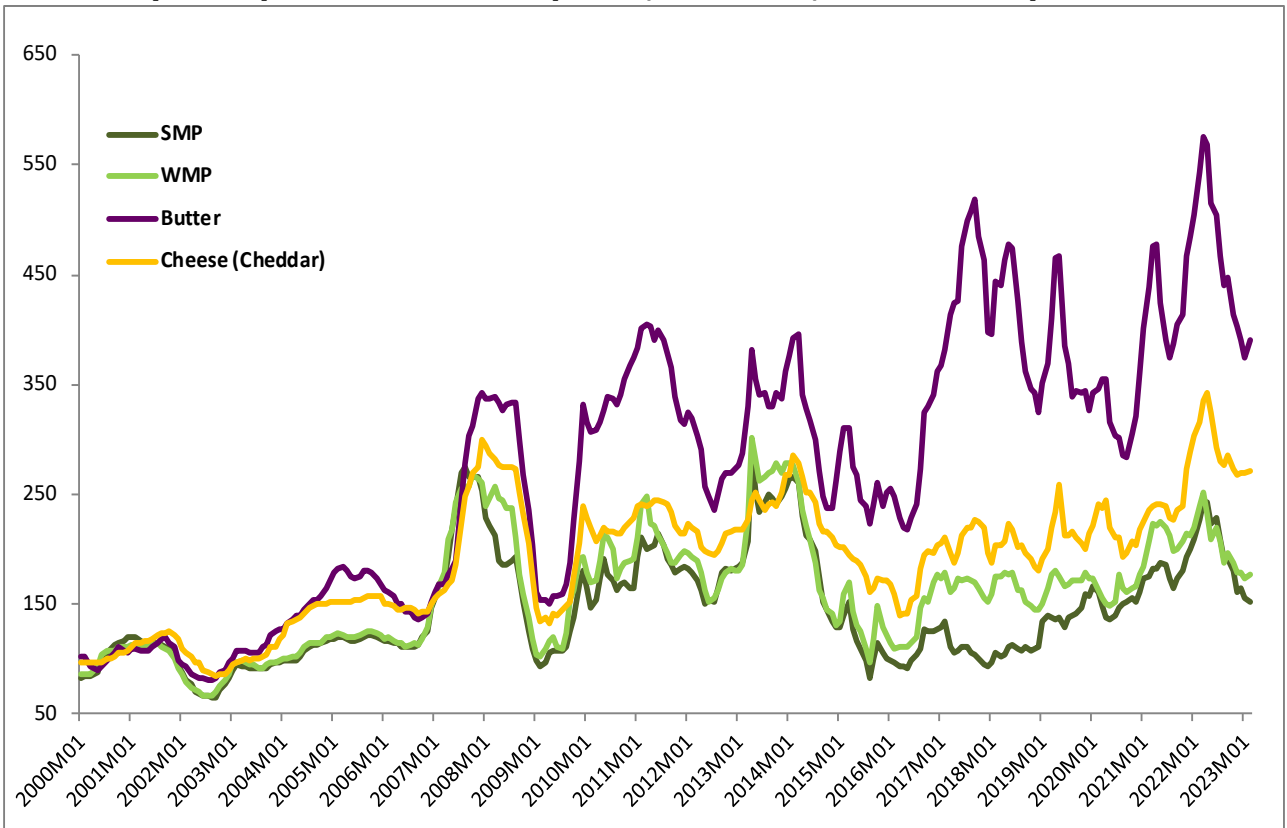
**Chart 6. Meat: international price developments (January 2000 until February 2023, 2000=100, based on USD)**



**Chart 7. Dairy: EU agricultural market and consumer price developments (January 2000 until February 2023, 2000=100)**



**Chart 8. Dairy: international price developments (Oceania) (January 2000 until February 2023, 2000=100, based on USD)**





## Annex 2

### Description of the price series used

#### PRICES IN ABSOLUTE TERMS

##### European Union

Unless stated otherwise, all EU prices are averages for the current composition of 27 Member States, including prices before the date of the withdrawal of the UK from the EU.

A monthly average of absolute prices for plant, dairy and animal representative products (including their description) is published and available on the internet at: [http://ec.europa.eu/agriculture/markets-and-prices/price-monitoring/monthly-prices/index\\_en.htm](http://ec.europa.eu/agriculture/markets-and-prices/price-monitoring/monthly-prices/index_en.htm)

As regards the cereal sector, representative market prices are used when comparing EU and World prices in page 1: Rouen (soft wheat and barley), Port-La-Nouvelle (durum wheat) and Bordeaux (maize).

EU pigmeat prices class E - change in definition following the implementation of the new single CMO regulation (as of 01.01.2014, more than 55% but less than 60% lean meat compared to 55% or more lean meat, until the before mentioned date) and a new class, S, became compulsory to cover pig carcasses with more than 60% lean meat.

Dairy - prices are based on MS notifications on the basis of which the EU weighted averages are calculated.

Rice - Japonica Italy and Indica Italy (DG Agriculture and Rural Development data based on EU Member States communications)

Sugar - white sugar (DG Agriculture and Rural Development based on EU sugar producers and refiners communications)

Rapeseed - CIF Hamburg, Europe "00" (USDA, OilWorld)

Sources: DG Agriculture and Rural Development (data communicated by EU Member States) and USDA Report on Oilseeds: World, markets and trade available at <https://apps.fas.usda.gov/psdonline/circulars/oilseeds.pdf>.

##### World

Wheat - US No.2, Hard Red Winter ord. Prot, US Fob Gulf (International Grain Council) and US No.2, Soft Red Winter Wheat, US Gulf (USDA)

Barley - Black Sea Feed fob (International Grain Council)

Maize - US no 2 Yellow Corn, export price fob Gulf (USDA)

Soya beans (US), c.i.f. Rotterdam (USDA, OilWorld)

Beef meat - Meat, beef (Australia/New Zealand), chucks and cow forequarters, frozen boneless, 85% chemical lean, c.i.f. U.S. port (East Coast), ex-dock, beginning November 2002; previously cow forequarters (World Bank)

Poultry meat - DG Agriculture and Rural Development calculation based on USDA weekly quotations for fresh chicken grade A, Chicago

Pigmeat - DG Agriculture and Rural Development calculation based on USDA weekly quotations for US "National Negotiated Swine. Weighted Average Price, Negotiated Carcass"

Butter - Oceania, indicative export prices, f.o.b. (AHDB calculated average of mid-point of price ranges reported bi-weekly, Dairy Market News, USDA)

Cheddar Oceania, indicative export prices, f.o.b. (AHDB average of mid-point of price ranges reported bi-weekly, Dairy Market News, USDA)

SMP Oceania, indicative export prices, f.o.b. (AHDB average of mid-point of price ranges reported bi-weekly, Dairy Market News, USDA)

WMP Oceania, indicative export prices, f.o.b. (AHDB average of mid-point of price ranges reported bi-weekly, Dairy Market News, USDA)

Rice - Japonica US Medium California 4% and Indica Thai Milled 5% Broken ("Creed market report"), simple average of weekly quotations

Sugar - London white sugar 05, nearby (closing), average of daily quotations (London International Financial Futures and Options Exchange)

Sources for world prices: World Bank (Commodity Price Data, Pink Sheet), FAO, USDA, OilWorld

<https://www.fao.org/giews/food-prices>

<https://www.worldbank.org/en/research/commodity-markets>.

#### AGRICULTURAL INPUT PRICES

Energy - Crude oil, UK Brent 38` API and US, West Texas Intermediate (WTI) 40` API; Natural gas (Europe) average import border price and a spot price component, beginning April 2010 including UK and Natural Gas (U.S.), spot price at Henry Hub, Louisiana.

Fertilizers - Diammonium phosphate, spot, f.o.b. US Gulf, Phosphate rock, f.o.b. North Africa, Potassium chloride (muriate of potash), spot, f.o.b. Vancouver, TSP (triple superphosphate), spot, import US Gulf, Urea, (Ukraine), f.o.b. Black Sea.

Source for input prices: World Bank (Commodity Price Data, Pink Sheet)

<https://www.worldbank.org/en/research/commodity-markets>.

#### FOOD PRICE INDICES

##### 1. EU consumer food price indices

The EU consumer food price index measures the change over time of the prices of consumer goods and services acquired by households. The food products included in this index are those purchased for consumption at home and include the following categories: "bread and cereals", "meat", "milk, cheese and eggs", "oils and fats", and "sugar, jam, honey, chocolate and confectionery".

A detailed description of its composition can be found on Eurostat website at:

[https://ec.europa.eu/eurostat/cache/metadata/en/prc\\_hicp\\_esms.htm](https://ec.europa.eu/eurostat/cache/metadata/en/prc_hicp_esms.htm).

##### 2. FAO food price index

The FAO Food Price Index is a measure of the monthly change in international prices of a basket of food commodities. It consists of the average of five commodity group price indices (representing 55 quotations), weighted with the average export shares of each of the groups for 2002-2004.

A detailed description of its composition can be found at:

<http://www.fao.org/worldfoodsituation/foodpricesindex/en/>

##### 3. World Bank food price index

The World Bank calculates commodity price indices for low and middle income countries (2010=100, 2002-2004 export value weights). The food index includes fats and oils, grains and other food (meat, sugar, etc) items.

A detailed description of its composition can be found at:

<http://www.worldbank.org/en/research/commodity-markets>